



BURLINGTON  
COMMUNITY  
FOUNDATION

## A YEAR OF VITAL COMMUNITY ACTION



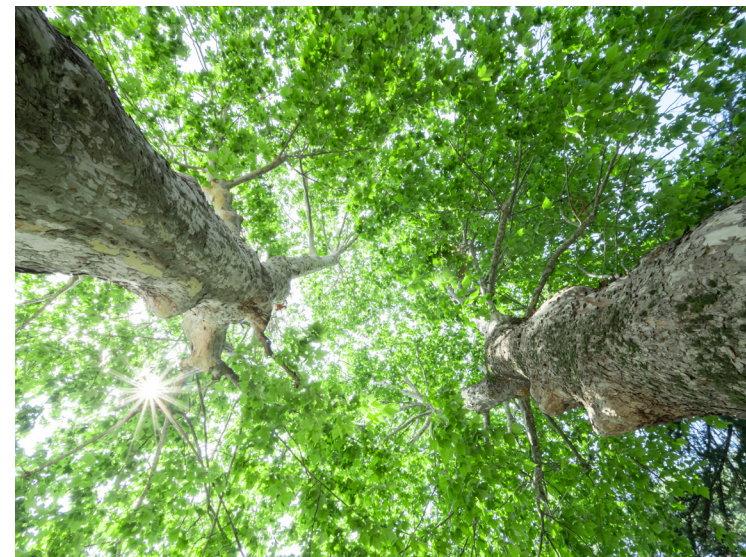
**LAND ACKNOWLEDGEMENT**

Burlington as we know it today is rich in history and modern traditions of many First Nations and the Métis. From the Anishinaabeg to the Haudenosaunee, and the Métis – our lands spanning from Lake Ontario to the Niagara Escarpment are steeped in Indigenous history.

**The territory is mutually covered by the Dish with One Spoon Wampum Belt Covenant, an agreement to peaceably share and care for the resources around the Great Lakes.**

The Burlington Community Foundation acknowledges that the land on which we gather, work and play is part of the Treaty Lands and Territory of the Mississaugas of the Credit.

We celebrate our Urban Indigenous brothers and sisters across Burlington and deeply value their contributions and voices in the community.



**ABOUT THE COVER PHOTO**



In 2025, BCF released a new Vital Signs research report, presented by FirstOntario Credit Union. The report showed how Burlington residents were feeling on a number of indicators of well-being, including health and wellness, the environment, standard of living and arts and culture. We launched the report with a community gathering and panel of charitable and business leaders, pictured here. Charitable leaders shared with attendees some of the challenges they're facing across the sector, including the need for more sustainable funding and the flexibility to use funds to invest in the development and well-being of their staff teams.

**WHAT'S INSIDE**

- 06 | CAUSES YOU CARE ABOUT
- 07 | CHARITABLE PARTNER STORIES
- 10 | VITAL ACTION IN COMMUNITY

- 14 | FUNDHOLDER SPOTLIGHT
- 16 | FUNDS HELD AT BCF
- 19 | ABOUT US

**YEAR IN REVIEW: 2025-2026**

REFLECTIONS FROM FOUNDATION LEADERSHIP

There are some years that just stand out and we're proud to say that fiscal 2025-26 is one of those years at the Burlington Community Foundation.

Building on our community engagement and legacy of philanthropy, we've continued to deepen our reach and connection with charitable partners, community members, and local government.

We re-imagined our Vital Signs research report (read more on pages 10-11), seeking firsthand feedback from Burlington residents about indicators of community well-being, such as housing and health and wellness.

We built on those insights through a Vital Community Conversation on housing, convening charitable experts, community members, and donors for an honest discussion around gaps, services, and action.

Following the release of Vital Signs – where affordable housing was identified as one of the top issues facing the city – we launched the Housing Support Fund, raising nearly \$80,000 in its first phase to support immediate and long-term community housing needs. The fund is one of BCF's Cause Funds (read more on page 6) and is now endowed. It will continue to grow

and provide grants for local housing support organizations.

Our website also received a fresh look with an enhanced user experience, making it easier for people to learn about the Foundation, its generous fundholders, and our charitable impact. That included a new Giving Hub to make online donations to causes people care about simpler.

The 2025-26 fiscal year is one we'll look back on with pride, as we set the stage for further growth and evolution. Thank you for joining us in community and partnership and we look forward to continuing to work together to strengthen Burlington through generosity.

**MEGAN TREGUNNO**  
PRESIDENT & CEO



**TIM CESTNICK**  
CHAIR, BOARD  
OF DIRECTORS



**READ OUR AUDITED  
FINANCIAL STATEMENTS  
FOR APRIL 1, 2025-  
MARCH 31, 2026**

[www.BurlingtonFoundation.org](http://www.BurlingtonFoundation.org)



**IN MEMORIAM  
DOUG LEGGAT**

At the end of last year, the Burlington community – and BCF – lost a true local champion with the passing of Douglas Leggat.

Known for his success as a business leader through

Leggat Auto Group, Doug was also a passionate community builder who offered his time, talent, and resources to support community.

His efforts helped create lasting change in Burlington that will have an impact for generations to come. He ensured Burlington would benefit from sustainable philanthropy, both as BCF's inaugural chair and through the Leggat Family Fund. Last fall, Doug and his wife, Maryella, provided a generous opening lead donation to BCF's Housing Support Fund through their fund, continuing the care for community that was central to his charitable leadership.

Doug will be greatly missed, and we are humbled to move forward at BCF in the spirit of generosity that exemplifies his community and philanthropic legacy.

## Q & A WITH TULIKA MAJUMDAR



Tulika Majumdar is a Senior Manager, Data Engineering, with RBC Insurance. She joined the BCF board as a director in 2024 and was later appointed Chair of the Community Leadership Committee. A Burlington resident, Tulika has generously shared her talent and time to support BCF, including participating in the Gender Equality Cohort hosted by Community Foundations of Canada in Victoria, B.C. earlier this year, and serving as a member of the Grant Review Committee for BCF's annual Community Granting Program.

### WHY DID YOU CHOOSE TO BECOME INVOLVED WITH THE BURLINGTON COMMUNITY FOUNDATION?

I chose to become involved with the Burlington Community Foundation because Burlington is truly home for me — a place where my heart settled the moment I arrived. As an immigrant who has built a life, family, and sense of belonging here, I feel a deep responsibility to give back and help shape the community that has given me so much. The Foundation's mission and vision resonate strongly with my own desire to leave a meaningful legacy for future generations, especially through causes that strengthen community well-being. Becoming involved is a natural extension of my belief that when a community embraces you, you give back with gratitude, purpose, and commitment.

### WHAT DO YOU WISH MORE PEOPLE KNEW ABOUT BCF AND ITS WORK?

I would want people to know that BCF is not just a foundation — it is an emotion that resonates through our shared values, our deep sense of belonging, and our collective commitment of giving back. It was initiated by like-minded individuals, but it has been carried forward by an enduring spirit of empathy, responsibility, and community pride. Its vision, though shaped in a boardroom, extends far beyond the boundaries of Burlington, reflecting an ambition to create impact that is both local and national.

### WHAT INSPIRES YOU AND YOUR FAMILY TO GIVE TO BCF?

As the Chair of the Community Leadership Committee, my responsibility is to help guide BCF's social impact investments in alignment with our strategic plan. While Vital Signs provides a clear lens into the community's most pressing needs, housing has emerged as one of the most significant areas requiring attention. Seeing this firsthand has deeply resonated with me. My family and I feel compelled to support this priority in whatever meaningful way we can, because strengthening housing stability strengthens the very foundation of our community. This is what truly inspires me to give to BCF — the opportunity to contribute to a broader cause that reflects both our values and our commitment to ensuring Burlington remains a thriving, inclusive home for generations to come.



## 2025-2026 BOARD OF DIRECTORS

**Tim Cestnick**, Board Chair  
Co-Founder & CEO, Our Family Office Inc.

**Carlos Alvarez**, Treasurer & Secretary  
Partner, KPMG

**Tulika Majumdar**, Chair, Community Leadership Committee  
Senior Manager, Data Engineering, RBC Insurance

**Cathy Olsiak**, Chair, Nominating & Governance Committee  
Partner, SimpsonWigle Law LLP

**Lisa Ritchie**, Chair, Investment Committee  
Vice-President Emeritus, Burgundy Asset Management Ltd.

**Matt Afinec**  
President & Chief Operating Officer, Business Operations, Hamilton Sports Group

**Kevin Brady**  
Director, Advica Health

**Dom Marinic**  
Director, Investments, The Pioneer Group Inc.



## INVESTMENT COMMITTEE

**Lisa Ritchie**, Chair  
Vice President Emeritus, Burgundy Asset Management Ltd.

**Tim Cestnick**, Board Chair  
Co-Founder & CEO, Our Family Office Inc.

**Dom Marinic**  
Director, Investments, The Pioneer Group Inc.

**Phil Reddon**  
Managing Partner, Covington Capital Corp.

**Mike Villa**  
Associate Investment Advisor, TD Wealth Private Investment Advice

## ENDOWMENT FUND ANNUAL RETURN FROM BCF'S INVESTMENT ADVISOR

BCF's investment strategy continued to demonstrate strength and adaptability in fiscal 2025-26, balancing growth and safety during continued times of geopolitical and economic uncertainty.

In partnership with Guardian Partners Inc., the Foundation maintained a thoughtfully constructed, diversified portfolio designed to deliver consistent results across a wide range of market environments. This includes diversification across investment managers, strategies, asset classes, sectors, and geographic regions.

In addition to traditional stocks and bonds, BCF's endowed assets allocation includes alternatives strategies, which are non-publicly traded investments, their purpose being to reduce portfolio volatility while providing an attractive long-term absolute return. Including alternatives strategies has indeed contributed to reduced volatility in BCF's portfolio performance, when measured against a comparable broad market benchmark.

Within the traditional stock holdings, the Foundation's portfolio was overweight Canadian equities during fiscal 2025-26. This was a strong contributor to overall returns.

BCF's endowed assets earned an annual return of 11.6% in fiscal 2025-26, against the annual goal of 8% established by the Burlington Community Foundation's board and Investment Committee. Since BCF started working with Guardian Partners Inc. in 2020, the Foundation's endowed portfolio has earned an annualized return of 10.1% over the 6-year period ending March 31, 2026.

A copy of BCF's full Investment Policy Statement can be found at [www.BurlingtonFoundation.org](http://www.BurlingtonFoundation.org).

**Andrew Dimock, CFA**  
Vice-President, Investment Counsellor  
Guardian Partners Inc.



## CAUSE FUNDS

### SUPPORT CAUSES YOU CARE ABOUT WITH ONE EASY DONATION

Burlington is a generous community that supports our neighbours in need. However, sometimes it can be difficult to know where to give. Through BCF's Cause Funds, individuals, businesses, and families can choose to support a specific cause in the community with one easy donation.

Donors can select a cause they care about and make a gift to the designated fund, simplifying the process to support areas of need. They can choose to support with one gift, multiple donations, or a legacy gift. Cause Funds also offer an easy way to support community causes through employee and charitable giving campaigns.



Visit the BCF Giving Hub to learn more about our Cause Funds and to make a donation.



## COMMUNITY PRIORITY STANDARD OF LIVING (INCLUDING FOOD SECURITY)

### FEEDHALTON

FeedHalton was built on collaboration and partnership to help strengthen food security in Halton Region. With a large warehouse facility, logistical support, and bulk procurement opportunities, the organization is providing vital infrastructure for local food security partners.

"Access to good, nutritious food is about human dignity," said Executive Director Robin Bailey. "Our neighbours who experience food insecurity are not able to fully thrive and FeedHalton exists to help change that at the system level."

Established in 2023, FeedHalton works with a network of community organizations, food banks and meal programs across Halton. The organization provides centralized online ordering and product delivery to its partner agencies. In 2025, FeedHalton distributed more than one million pounds of food and goods across Halton and to other regional hubs through sector partnerships.

Initially, deliveries were handled by an experienced volunteer driver, as is standard for many food organizations. Now, thanks to a \$10,000 grant from BCF's annual Community Granting Program and a generous \$25,000 anonymous grant from a donor advised fund held at BCF, FeedHalton will be able to hire a part-time driver and warehouse support staff person.

"Adding this role to the organization is a key element to expanding our distribution capacity throughout the region," said Robin. "The result will be an increased volume of food and goods delivered into Burlington and Halton on a regular, consistent basis. We are grateful to the Foundation and its generous fundholders for supporting our growth and essential services."

Hiring a driver will allow more than 5,000 pounds of food to be transported in one trip due to the nature of a professional truck driver licence. The addition of a staff driver will create a more consistent delivery schedule through the week.



Photo: Dave Gruggen

"By being intentional with our centralized warehouse location in Burlington, FeedHalton is able to support numerous agencies throughout the region, providing a hub of support to strengthen food security operations."

Executive Director Robin Bailey



#### HOUSING SUPPORT FUND

Provided immediate funds for housing support and now invested for the long-term



#### MENTAL WELLNESS ENDOWMENT FUND

Supports mental health and wellness programming and initiatives



#### BCF - GREATEST NEEDS

Supports BCF's annual Community Granting Program



#### BCF SUSTAINABILITY FUND

Supports BCF's mission, allowing us to grow, prosper and strengthen community

"My aunt knew that she wanted to have an impact in her community through her estate. She chose five charities to support in her will, ensuring that causes she cared about would benefit from her estate after she passed."

**DUKE THORNLEY**, nephew of Catherine Utter, who created the Eva and Lloyd Utter Memorial Fund and left a legacy gift through her will to BCF.

Scan to read the full story at [www.BurlingtonFoundation.org](http://www.BurlingtonFoundation.org)



[FEEDHALTON.CA](http://FEEDHALTON.CA)

Info@FeedHalton.ca

289-313-8787

**\$90,038**

Total amount granted to support food security in 2025-26

# COMMUNITY PRIORITY CHILDREN & YOUTH

## CANADIAN CARIBBEAN ASSOCIATION OF HALTON

Burlington students now have an opportunity to learn about the historical and cultural significance of the steelpan, thanks to the Harmony in the Classroom program.

The free program, run by the Canadian Caribbean Association of Halton (CCAH), was able to provide programming at up to 15 Burlington schools thanks to a \$15,000 grant from BCF's annual Community Granting Program. CCAH has run a free steelpan music program in Oakville schools since 2024.

"The Harmony in the Classroom program is an important initiative to ensure that students have equal access to culturally diverse programming," said Dionne Downer, executive director of CCAH.

"Teachers and principals have expressed that students are starving for connections to creative, inclusive programming that promotes belonging, identity, and cultural understanding. The CCAH Steel Band performances are a unique and fun vehicle for this journey."

The program offers elementary and secondary school students a chance to learn about the steelpan, an instrument born from resilience, creativity, and cultural expression in the Caribbean.

It is offered in two formats, tailored to the number of students taking part. Larger groups enjoy a performance and multimedia presentation, while smaller classrooms can take part in an interactive session where students learn to play the steelpan.

"Students gain not only technical exposure to a unique instrument, but also a deeper appreciation for cultural diversity, resilience, and the importance of the arts in community life," said Dionne.

Schools can reach out to CCAH and request to participate in the program. The organization aims to expand Harmony in the Classroom to additional Burlington schools.



“By celebrating diversity and fostering inclusion in the classroom, the Harmony in the Classroom program provides students with transformative experiences that inspire creativity, confidence, and community pride.”

Executive Director Dionne Downer

CCAH.CA

✉ Info@CCAH.ca

📞 905-815-6184

▮ **\$313,677**

Total amount granted to children & youth in 2025-26

# COMMUNITY PRIORITY HEALTH, MENTAL HEALTH & WELL-BEING

## DISTRESS CENTRE HALTON

For more than 50 years, Distress Centre Halton (DCH) has been providing confidential, free support to individuals facing emotional stress, loneliness, and crisis. As the need for connection grows, so too does demand for services.

As of fall 2025, DCH support and crisis calls increased more than 40% monthly, with outbound support calls growing 20-35%.

"We often say 'You can listen a person's soul back into existence,' because we know that if someone can speak their story, and know that another truly hears it, we are somehow healed by that," said Dara Eisner Clancy, executive director.

DCH operates an inbound distress and crisis line, as well as an outbound scheduled check-in call service. More than 300 trained volunteers, spread across five generations, and speaking more than 38 languages, handle these calls after completing a comprehensive seven-week training program focused on active listening, de-escalation, and suicide prevention.

"The ability to connect to the stories of the callers and clients, hearing the relief at the end of a befriending call or talking with an unknown caller about one of the biggest changes in their life — this is why I listen," shared a DCH volunteer.

Last fall, BCF provided a \$10,000 grant from its Burlington Community Fund, a Cause Fund that supports local charitable grants. The funding was supported through BCF's Mental Wellness Endowment Fund, which provides grants annually to strengthen mental health initiatives in the local community.

The grant will help DCH grow its capacity through the training and recruitment of more volunteers to ensure that there is always someone there to listen.



“This investment ensures Burlington residents have compassionate, accessible, and life-changing support when they need it most.”

Executive Director Dara Eisner Clancy

DCHALTON.CA

✉ Info@DCHalton.ca

📞 905-849-4559

▮ **\$1,057,328**

Total amount granted to health, mental health & well-being in 2025-26



## VITAL ACTION IN COMMUNITY

This past year was a time of vital community action at BCF. We re-envisioned our Vital Signs community report, seeking firsthand insight from Burlington residents on key indicators of well-being. The report, presented by FirstOntario Credit Union, was launched in September at a gathering of charitable partners and community supporters at the Art Gallery of Burlington.

Following the research presented in Burlington's 2025 Vital Signs report, which identified affordable housing and cost of living as important issues facing the city, BCF launched the Housing Support Fund.

The fund has raised nearly \$80,000 in its first phase and was able to provide immediate grants of \$25,000 each to Shifra Homes, Halton Region's only maternity residence, and Wesley, which operates the region's only emergency shelter for families in Burlington.

Now in its second phase, the fund is permanently endowed and will provide dedicated funding each year to support grants to local organizations. The public is welcome to support the Housing Support Fund, or any BCF Cause Fund, through gifts of all sizes.

In 2026, we also continued our Vital Community Conversations Series, now in collaboration with Burlington Public Library, to help deepen outreach and extend the discussion around these vital community issues.

The first conversation took place in January on housing, bringing together charitable experts, government officials, and community members to learn about and share tangible actions we can all take to support this urgent community need.

**Together, we are taking vital community action to make Burlington a more inclusive and equitable city for all residents.**

Burlington's 2025 Vital Signs Presenting Sponsor:

**FirstOntario**  
CREDIT UNION



## GENDER EQUALITY COHORT

Throughout the past year, BCF has taken part in the Gender Equality Cohort initiative, led by Community Foundations of Canada. BCF leadership has participated in collaboration, commitments, and sharing around actionable ways to enhance gender equality, including joining a national conference in Victoria earlier this year.

CEO Megan Tregunno and Community Leadership Committee Chair Tulika Majumdar travelled to British Columbia in March to share and learn.

"This gathering was a wonderful opportunity to learn more about how others are implementing gender equality measures and provided a chance to connect with part of our strong national network of community foundation peers," said Megan.

As part of the cohort, BCF committed to creating an action plan around advancing gender equality, systemically and organizationally. We also granted \$125,000 in our 2025-26 fiscal year to support social justice, inclusion and women's support.

BCF's Board of Directors also unanimously adopted a resolution in support of the Elect Respect campaign, which advocates for elected officials to be treated respectfully.

# COMMUNITY PRIORITY HOUSING

## WESLEY

When children and families arrive at Halton Region's only emergency shelter for families, staff from Wesley's Emergency Supportive Housing program make sure they have what they need.

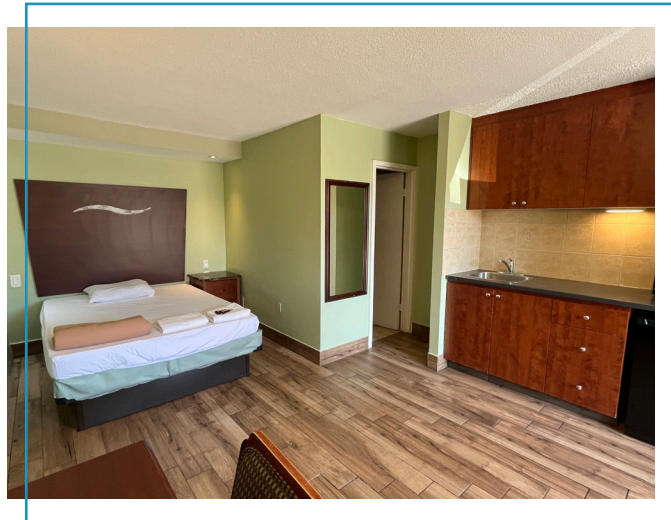
The shelter, comprised of 43 rooms in Burlington, is home to 70-100 people at any given time. Residents include families, young children, and single women, and approximately 75 are from Burlington. In its 2024-25 fiscal year, the program supported 310 clients, including 91 children. Since 2017, Wesley has collaborated with Halton Region to offer housing support at the shelter. The region provides operational funding, but not capital funding, meaning items such as bunk beds are not covered.

"A safe, comfortable environment is vital to the physical and emotional well-being of families in crisis," said Kristyn Bruce, senior director, housing and outreach services. "The addition of bunk beds creates a more supportive environment, providing better sleep and lower stress, which all contribute to overall wellness and successful housing outcomes."

Last fall, BCF provided \$10,000 toward the purchase of 20 bunk beds through its annual Community Granting Program. An additional \$25,000 was provided through its Housing Support Fund, one of several BCF Cause Funds that allow donors to support specific needs.

"This initiative is allowing Wesley to expand access to safe, dignified housing," said Kristyn. "We are grateful for the support we have received from the Burlington Community Foundation and the Housing Support Fund to help us support families, children, and women in the community."

To ensure that no families were displaced and no available beds were lost during the transition, Wesley planned to implement the program in stages.



“By investing in better living conditions within the shelter, we are fostering a healthier, more supportive environment that helps families rebuild their lives and transition successfully to permanent housing.”

Senior Director, Housing and Outreach Services  
Kristyn Bruce

WESLEY.CA

✉ Info@Wesley.ca

☎ 905-528-5629

\$70,000

Total amount granted to safe & affordable housing in 2025-26



Conservation Halton holds two funds with the Burlington Community Foundation: one designed to support its sustainable operations and one uniquely established to support the Raptor Centre at Mountsberg Conservation Area.

The Douglas G. Cockburn Managed Fund was started by generous Conservation Halton donor Marguerite Gray.

"Marguerite's wish was to honour her brother, Douglas G. Cockburn, by establishing a fund that would support the Centre's ongoing activities and ensure the community could continue to benefit from its unique, nature-based educational programming for generations to come," said Garner Beckett, executive director of the Conservation Halton Foundation.

Over the years, the support of the Douglas G. Cockburn Managed Fund has contributed to various projects at the park, including enhancing learning spaces, advancing education programs, and contributing to the Pioneer Boardwalk that allows families and school groups to have hands-on interaction with the park's wetland ecosystem.

# CHARITABLE AGENCY FUND SPOTLIGHT: CONSERVATION HALTON



"The fund also supports the ongoing veterinary care of our raptors and farm animals," said Garner. "Programs in the Raptor Centre and the Animal Barn give visitors the opportunity to meet these animals up close while learning about their personalities, relationships, diets, and individual needs."

Each year, Mountsberg welcomes thousands of visitors to learn about farm animals and native birds of prey. In 2026, the fund will help replace Raptor Centre enclosures that are more than 30 years old. The project will create two larger, flexible pens featuring sliding divider walls to accommodate the needs of resident birds and Raptor Centre staff.

The fund established to support Conservation Halton's vital operations is called the Green Values Fund. Both funds welcome donations that help the organization's long-term goals.

To learn more about the Raptor Centre and Conservation Halton, visit [www.ConservationHalton.ca](http://www.ConservationHalton.ca)

## CHARITABLE AGENCY FUNDS HELP PROVIDE SUSTAINABILITY

- Art Gallery of Burlington Fund\*
- AGB Arts Fund for Kids
- Burlington Food Bank Fund
- Burlington Museums Foundation Fund\*
- Burlington Public Library Permanent Endowment Fund
  - Mae Beatrice Broadbent Fund
  - Millicent McEwen Fund
  - Wendy Schick Fund
  - Margaret Clay Fund
- Burlington Teen Tour Band Boosters Inc. Fund
- Carpenter Hospice Endowment Fund
  - Walter and Louise White Fund
- Community Living Burlington Fund
- Conservation Halton
  - Foundation Fund (Douglas G. Cockburn Managed Fund\*)
  - Green Values Fund
- Halton Women's Place Fund
- Myriad Ensemble Choral Catalyst Fund
- RBG Endowment Fund – Dan Lawrie International Sculpture Collection
- United Way of Halton & Hamilton
  - Campaign Fund
  - Tomorrow and Forever Fund\*

\*Funds held on behalf of others

## FUNDHOLDER SPOTLIGHT

### RALPH AND SUSAN SGRO

Burlington residents Ralph and Susan Sgro have held a fund with the Burlington Community Foundation for many years. However, when their daughter Lindsay (Sgro) Bridge passed away in 2024 at the age of 44, they knew they wanted to create something special in her honour.

Last year, through a \$1 million transformational gift commitment, the Sgros started the Lindsay's Loves Fund, a donor advised fund that supports causes Lindsay cared about. The fund focuses on enhancing access to the arts for children and youth and will also support well-being for families and children.

"Lindsay had an unmistakable enthusiasm for life that brought people together," said Susan. "It's been very meaningful for us to be able to support local programming and initiatives we know she would have loved, through this new fund created in her honour."

The symbol of the fund is a dragonfly, which reflects Lindsay's spirit and represents change, inspires creativity and provides a reminder that anything is possible.

Within its first year, the Lindsay's Loves Fund has provided grants to the Art Gallery of Burlington to support its bursary program, ArtHouse Halton to support its arts-based programming for underserved youth in the region, and Ronald McDonald House Charities South Central Ontario to support a new outdoor playground.

It has also provided seed funding for Burlington-based upper voice choir Myriad Ensemble to start its own fund at BCF. The Myriad Spirit Award, a scholarship, was created in Lindsay's honour.

"We know there will be many more opportunities to support the great work of local organizations," said Ralph. "We look forward to continuing to work with the Burlington Community Foundation to identify meaningful local needs and create a lasting impact as part of Lindsay's legacy."

The Sgros, retired owners of McDonald's Restaurants in Burlington and Waterdown, and



their son and current owner Ryan Sgro, have long been generous supporters of charitable causes.

Susan was part of the Foundation's Board of Directors for six years, including a term as Chair from 2004-2006. In 2014, Ralph and Susan were named Philanthropists of the Year by the Foundation.



“When we decided to honour our daughter's legacy through the Lindsay's Loves Fund, a donor advised fund with the Burlington Community Foundation was a seamless fit. The administration of the fund is professionally handled, allowing Susan and I to focus on what matters most – honouring Lindsay by supporting interests she was passionate about.”

- Ralph Sgro

## FUNDS HELD AT BURLINGTON COMMUNITY FOUNDATION

People come to the Burlington Community Foundation to learn how to make a difference in the community. It begins with the simple act of caring. Our team works with individuals, families, and businesses to build a generosity plan aligned with their vision. This can include giving to an existing fund, starting their own fund, or planning for a legacy gift. Each avenue can help donors support causes they care about – and we can help you identify what will work to meet your generosity goals.

BCF has a wide range of funds to choose from, including short-and long-term funds. Donors who start a fund can name that fund, with many choosing to create a fund in their own or family name, while others may create a fund in honour of someone special. A list of funds held by the Burlington Community Foundation, created by community-minded citizens, organizations, and businesses, can be found on the following pages.



## OUR LEGACY OF IMPACT

**12** NEW FUNDS  
CREATED IN 2025-26

**138** FUNDS HELD  
AT BCF

**\$14.9** GRANTED SINCE  
INCEPTION IN 1999  
MILLION

**\$27.9** TOTAL ASSETS  
HELD BY BCF  
MILLION

## DONOR ADVISED FUNDS

(INCLUDING DONOR DESIGNATED, FIELD OF INTEREST AND COMMUNITY)

- Anonymous Family Fund
- Basadur Family Foundation Fund
- BDO Burlington Community Fund (Endowed and Term)
- Beatrice McDonough Family Foundation Fund
- Bette and Keith Munro Foundation Fund
- Beverley and Walter Mulkewich Community Development Fund
- Birbari Wealth Management Fund
- Brechin Family Community Fund
- Brechin, Huffman and Henderson Fund
- Burlington Community Foundation Impact Fund
- Burlington Community Fund
- Burlington Community Youth Advancement Fund
- CLV Group/InterRent REIT Philanthropic Fund
- Crawford Lake Fund
- Creative Results for Kidz Endowment Fund
- Dalton Timmis Group Fund
- Dan Lawrie Family Foundation Fund (Endowed and Term)
- DanceScape Endowment Fund
- David Bruce Sergeant Fund
- Dewitte Family Fund
- Dr. John and Jennifer Bozek Family Fund
- Dunsford Family Term Fund
- Erica & Pat Smith Fund
- Ethel and Roly Bird Fund
- Eva and Lloyd Utter Memorial Fund
- Fontaine Family Fund (Endowed and Term)
- Foxcroft Family Fund
- Frank Allison Foundation Fund in Loving Memory of his Mother, Olga Allison
- Friends of Heritage Burlington Fund (Endowed and Term)
- Gurduran & Marianne Singh-Waraich Fund
- GWD Foundation for Kids
- H. Fred Janson Fund for the Developmentally Handicapped
- Haggerty/Durocher Fund
- Halton Heroes Fund (Endowed and Term)
- Hamilton Family Fund
- Healthy Reflections Canada Fund (Endowed and Term)
- Helen Zdriluk Memorial Fund for the Performing Arts (Endowed and Term)
- Hogarth Family Foundation Fund
- James Paton Heron Fund
- Jayne's Impact (Term) Fund
- Jean Ellen Griffin Fund
- Joyce Cooper Foundation Fund
- Kempe Family Fund
- Kimberley Kovalchek Legacy Fund
- Leggat Family Fund
- LKH Legacy Fund
- LKH Spirit Fund
- Lorraine and Andrew Smith Community Fund
- Louise Cooke Fund for the Visual and Performing Arts
- Love, Jayne Foundation Fund
- Marsh Family Fund
- Mayor's Gala Fund
- Mayor's Green Fund
- M.E. Devitt Fund (Endowed and Term)
- Mental Wellness Endowment Fund
- Milne Family Foundation Fund (Endowed and Term)
- Nelson and Gary Allan Fund
- Nicholas Hurlbut Memorial Fund
- Now I Can Children's Fund
- Ontario Endowment Fund – Child & Youth in Recreation
- Pasquale (Pat) and Anita Paletta Foundation Fund

- Paul Hansell Foundation Fund
- Performing Arts Burlington Fund
- Performing Arts Youth Endowment Fund
- Pieczonka Family Foundation Fund
- Pioneer Group Term Fund
- Plains Road Village Vision Fund
- Ralph and Susan Sgro Family Fund
- Randy and Denise Reeve Family Fund (Endowed and Term)
- Reddon Family Fund
- Robert D. Gould Foundation Fund
- Robert West Fund

- Ruth Milne Fund (Endowed and Term)
- Sarah and Donald Munro Memorial Fund
- Smiling Hearts Foundation Fund (Endowed and Term)
- Smith Family Fund
- Susan Marcus Foundation Fund
- Sydney Robis Memorial Fund
- Uffelmann Family Foundation Fund
- Valley Fund
- Vaski Family Performing Arts Fund
- Weatherdon Fund for Early and Lifelong Nutrition
- William and Susan McGregor Fund

## SCHOLARSHIPS, BURSARIES AND AWARDS

- Aldershot School Fund
- Burlington Chamber of Commerce Scholarship Fund
- Burlington Economic Development Corporation Mayor's Apprenticeship Fund
- Burlington Medical Society Scholarship Fund
- Cheryl Miles Goldring Foundation Fund\*
- Lawrence Sinclair Scholarship Fund
- Mario Rende Scholarship Fund
- Matthew C. Daly Scholarship Fund
- Mayor Rick Goldring Scholarship Fund\*
- SB Partners Scholarship Fund
- Women's Advancement Scholarship (Legacy of The Junior League Hamilton-Burlington Inc.)

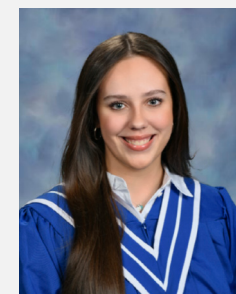
\*Established as legacy funds

## NEW FUNDS

THE FOLLOWING FUNDS WERE ESTABLISHED IN 2025-2026

- Adamson Family Fund
- Anderson Family Fund
- AGB Arts Fund for Kids\*
- Blake Family Fund
- Ernst Family Endowment Fund
- Gagnon Family Fund (Endowed and Term)
- Housing Support Fund
- Levie Community Fund
- Lindsay's Loves Fund
- Myriad Ensemble Choral Catalyst Fund\*
- Sweetlove Family Fund

\*Established as charitable agency funds

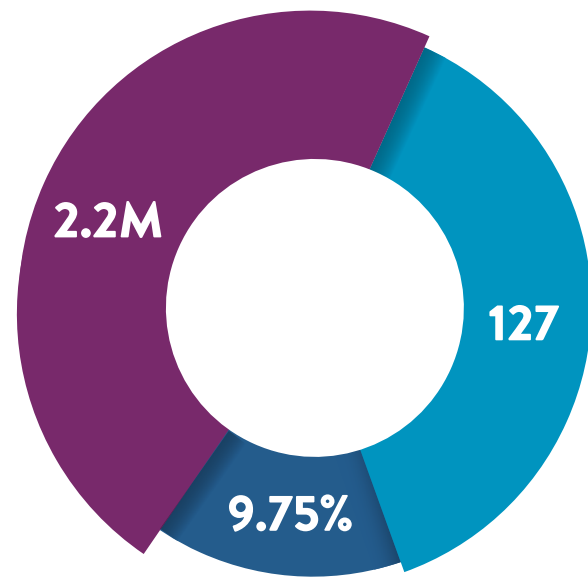



“Knowing that my efforts to uplift others and contribute positively to my school community were seen and valued was both affirming and motivating. The (award) gave me greater freedom to fully focus on my academics and campus involvement as I began university. I am truly grateful for the Foundation's support and inspired to keep making a difference in every community I am part of.”


-Ava McCauley, recipient of the Paul Hansell School Life Award  
Read the full story online at [BurlingtonFoundation.org](http://BurlingtonFoundation.org)


Every effort is made to ensure the full accuracy of fund lists.  
Please reach out to our team at 905-639-0744 to provide a correction.

# FISCAL 2025-26: BY THE NUMBERS



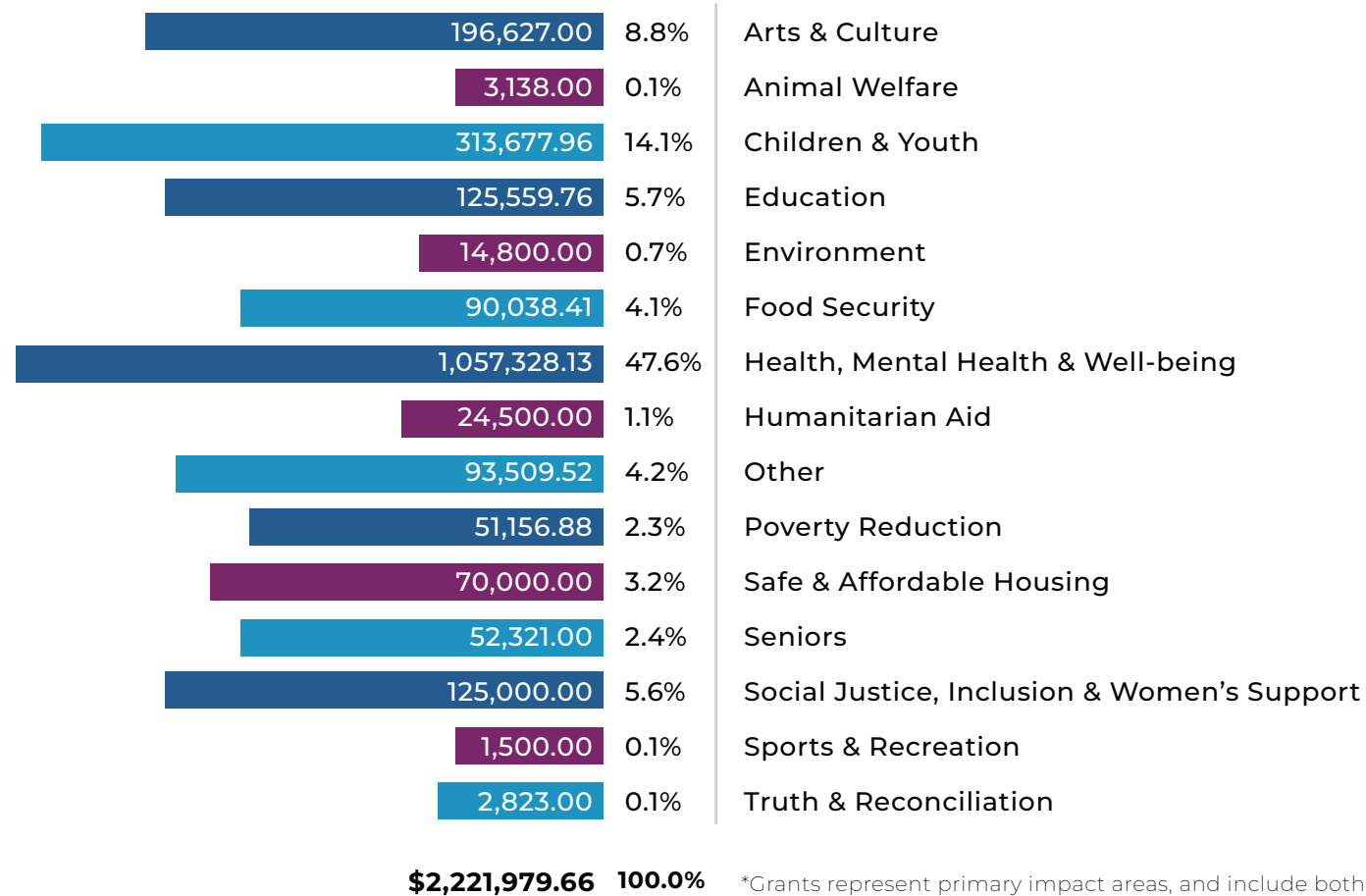
 \$2.2 million: Grants distributed

 127: Organizations supported

 9.75%: Percentage of BCF assets disbursed

For a full list of grants made visit [www.BurlingtonFoundation.org](http://www.BurlingtonFoundation.org) to view our financial statements for the fiscal year ending March 31, 2026.

## \*GRANTING IMPACT AREAS



\*Grants represent primary impact areas, and include both donor advised and Foundation directed.

## ABOUT US



“ Burlington is a deeply generous community. We're proud to help generosity go further through more sustainable philanthropy, by connecting people to causes they care about. ”

-MEGAN TREGUNNO, CEO



### OUR VISION FORWARD

An informed, engaged and generous community, working together in support of a resilient and inclusive Burlington for all.



### OUR PURPOSE

We are dedicated to advancing community well-being and belonging, by connecting generosity and resources to meet evolving local needs.



### OUR VALUES

The Burlington Community Foundation is guided by collaboration, transparency, innovation, inclusivity, and adaptability in everything we do.

## WHAT'S NEXT FOR BCF

- Continue our Vital Community Conversations Series, including a special conversation on gender equity.
- Mobilize Foundation assets for greater impact as part of a new 3-year pilot initiative with southwestern community foundation peers through a Social Impact Investing Hub.
- Launch a new summit event, The Legacy Exchange, in fall 2026, connecting legacy with philanthropy and community.
- Launch year two of BCF's participation in the Gender Equality Cohort from Community Foundations of Canada.
- Introduce multi-year granting in BCF's annual Community Granting Program, providing more sustainable funding for local charities.
- Deepen our partnerships with fundholders, community, and charities through impactful tools, gatherings and engagement.



Stay connected with what's happening at BCF – subscribe to our monthly newsletter.

The Burlington Community Foundation is this city's giving and generosity hub. Since 1999, BCF has helped generosity go further and last longer. We partner with donors to create permanent, income-earning funds that support causes they care about, year after year. Since inception, \$14.9 million has already flowed into the people, projects, and non-profits that strengthen Burlington and communities across Canada.

# OUR TEAM

---

**Megan Tregunno**, CFRE  
Chief Executive Officer  
905-639-0744 ext. 2  
MTregunno@BurlingtonFoundation.org

**Dana Brown**  
Manager, Communications & Grants  
905-639-0744 ext. 1  
DBrown@BurlingtonFoundation.org

**Finance Inquires**  
Finance@BurlingtonFoundation.org

# CONTACT US

-  Burlington Community Foundation
-  Physical: 1122 International Boulevard,  
Suite 700, Burlington, ON L7L 6Z8
-  Mailing: PO Box 91590  
RPO Roseland Plaza  
Burlington, ON L7R 4L6
-  [www.BurlingtonFoundation.org](http://www.BurlingtonFoundation.org)
-  [Info@BurlingtonFoundation.org](mailto:Info@BurlingtonFoundation.org)
-  905-639-0744
-  @BurlingtonFoundation
-  Charitable Registration  
#857812739 RR 0001

# Thank You

Thank you to everyone who makes the work of the Burlington Community Foundation possible.

We're grateful to our volunteers, Board of Directors, committee members, fundholders, and charitable partners whose contributions help build a community of connection and generosity. Our ability to create meaningful impact depends on your dedication, time, and support. Your commitment to building sustainable philanthropy for the long-term is truly invaluable.

We also thank our corporate and family foundation partners for your ongoing generosity and for supporting the mission of the community foundation throughout the year.



**Pieczonka Family  
Foundation**

**The Pioneer Group Inc.  
& The Hogarth Family**