

A YEAR OF ENGAGEMENT & EVOLUTION



ABOUT THE COVER PHOTO



For more than 95 years, Acclaim Health has been Halton’s most trusted source of extraordinary community care, helping people live well at home. The Burlington Community Foundation provided a grant for art sessions at Acclaim Health’s Adult Day Program, known as the Burlington Club, for people living with dementia. Through a partnership with the Art Gallery of Burlington, this project fostered creative self-expression, social connection, and emotional wellbeing for club members. A selection of artwork primarily created by club members is proudly displayed on a gallery wall at the Burlington Club, as seen on the front cover.

LAND ACKNOWLEDGEMENT

Burlington as we know it today is rich in history and modern traditions of many First Nations and the Métis. From the Anishinaabeg to the Haudenosaunee, and the Métis – our lands spanning from Lake Ontario to the Niagara Escarpment are steeped in Indigenous history. The territory is mutually covered by the Dish with One Spoon Wampum Belt Covenant, an agreement between the Iroquois Confederacy, the Ojibway and other allied Nations to peaceably share and care for the resources around the Great Lakes.

The Burlington Community Foundation acknowledges that the land on which we gather, work and play is part of the Treaty Lands and Territory of the Mississaugas of the Credit.

We celebrate our Urban Indigenous brothers and sisters across Burlington and deeply value their contributions and voices in the community.



This past year has been one of celebration and evolution for the Burlington Community Foundation (BCF). It has been a time of growth and strengthening connection with our community and charitable partners, fundholders, and new Foundation friends.

We have moved forward with bold ambition in our new Strategic Plan, which will guide our operations for the next three years, and marked a milestone of 25 years of acting as Burlington’s trusted philanthropic partner.

As part of our evolution, we have transitioned from a mission statement to a purpose statement, knowing that a deeply held sense of commitment to community and collaboration is at the heart of everything we do.

Building on learnings from the past three years, we are moving forward in key ways that will seek to enhance the impactful partnerships we have already created, and establish new ones in meaningful ways that will create the greatest community impact.

As part of our new Strategic Plan, we have established three goals that will guide the Foundation (see Page 22). These goals will help us all stay the course through uncertain times, where vital needs and pressing community concerns are changing, both in nature and in the way they need to be addressed.

We will also track our progress through a new Community Leadership Committee of the Board which, together with Foundation staff, will measure our progress against our plans, while remaining nimble in our operations to respond to the community’s changing needs. As part of our continued collaboration, we have

also undertaken a logo refresh. We have operated as the Burlington Foundation for many years, however, Burlington Community Foundation has been our legal name since our inception in 1999. Today, more than ever, community remains at the centre of our focus.

During our recent strategic plan community consultation, we heard loud and clear about the community’s deep belief in our role as a local trusted leader. Community has, and always will be, at the centre of our purpose.

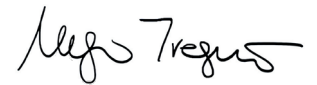
We have refreshed our identity to reflect this and are proud to partner with generous people like you to strengthen Burlington, and communities across Canada, as the Burlington Community Foundation - our city’s giving and generosity hub.

As we celebrated 25 years of impact in our local community and beyond, we move forward knowing that the steadiness community foundations provide will be essential in these times.

During the past year, our focus was on vital needs in the community. These included: food security; health, mental health and wellbeing; social justice, inclusion and women’s support (including intimate partner violence); and children and youth. You will see stories about people making a difference in these areas in this report. These pressing community needs will continue to grow and evolve, and we are committed to meeting them through partnership and collective action, as we have for more than two decades.

Our vision forward is one of an informed, engaged and generous community that will help create an inclusive and resilient Burlington for all. We know that in community, we will be able to achieve these goals as we move forward into the next 25 years.

MEGAN TREGUNNO
PRESIDENT & CEO



TIM CESTNICK
CHAIR, BOARD
OF DIRECTORS



WHAT’S INSIDE

6 25TH ANNIVERSARY	15 FUNDHOLDER SPOTLIGHTS
7 PRIORITIES 2024-25	20 FUNDS HELD AT BCF
8 IMPACT STORIES	22 ABOUT US



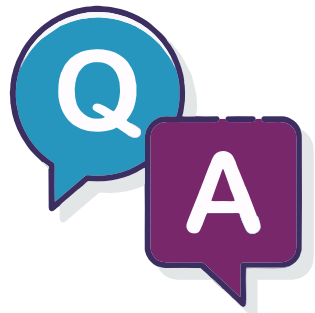
**READ OUR AUDITED
FINANCIAL STATEMENTS
FOR APRIL 1, 2024-
MARCH 31, 2025**

ó ó ó .Dı ūê}ÁÁLÁĀŽŠ|ŪÁĀĈ

Q & A WITH OUR BOARD CHAIR



Tim Cestnick, co-founder and CEO of Our Family Office Inc., has been a board member at the Burlington Community Foundation for many years. As a Burlington resident, he has generously donated his time and resources to serve the community through the Foundation. He previously served as Chair of the Investment Committee and, this past year, became chair of the Board for a two-year term.



WHAT INSPIRES YOU TO DEVOTE YOUR TIME AND RESOURCES TO THE BURLINGTON COMMUNITY FOUNDATION?

Joining the Board of BCF has allowed me to, in a very practical way, help in making life in our community better. I feel an important sense of obligation to helping the community in which our children were raised. Our family has benefited from living here, and the community needs the contributions of those who call Burlington home to ensure our community remains one of the best in which to live and raise a family.

WHAT INSPIRES YOU ABOUT THE NEW VISION OF THE BURLINGTON COMMUNITY FOUNDATION?

I have seen firsthand the difference that BCF has made in our community. I think of our Foundation as an important custodian of the health of our community, and without a clear vision for how we will make a difference, the most important needs in our community can go unmet ... Ultimately, our vision is to foster collaborative action to make a difference in the community — and that means real solutions to meet important needs. That's inspiring to me.

WHAT ARE YOU MOST PROUD OF THIS PAST YEAR WITH THE BURLINGTON COMMUNITY FOUNDATION?

I'm very proud of the role that our Foundation has played in supporting so many worthy charities in our community over the last year. The process of granting funds to applicants is very satisfying — although we'd like to do even more. I'm also proud of the work that our very talented Board has undertaken in the last year to set a clear vision for the future. The result was a strategic plan which I am confident will see the Foundation make an ever-growing impact in our community in the coming years ... On behalf of the Board, I can say that we are all excited to see the difference that our Foundation — hand in hand with supporters — will make in our community over the next year and beyond.



2024-2025 BOARD OF DIRECTORS

Tim Cestnick, Board Chair
Co-Founder & CEO, Our Family Office Inc.

Carlos Alvarez, Treasurer & Secretary
Partner, KPMG

Cathy Olsiak, Chair,
Nominating & Governance Committee
Partner, SimpsonWigle Law LLP

Lisa Ritchie, Chair, Investment Committee
Vice-President Emeritus,
Burgundy Asset Management Ltd.

Catherine Brady, Past Chair
Retired Business Leader
& Community Champion

Matt Afinec, President and Chief Operating
Officer, Hamilton Sports Group

Kevin Brady
Director, Advica Health

Tulika Majumdar, Associate Director,
Data Engineering, RBC Insurance

Dom Marinic, CPA, CIM, FCSI
Director, Investments,
The Pioneer Group Inc.



INVESTMENT COMMITTEE

Lisa Ritchie, Chair
Vice President Emeritus, Burgundy Asset
Management Ltd.

Tim Cestnick, Board Chair
Co-Founder & CEO, Our Family Office Inc.

Dom Marinic
Director, Investments, The Pioneer Group Inc.

Phil Reddon
Managing Partner, Covington Capital Corp.

Mike Villa
Associate Investment Advisor,
TD Wealth Private Investment Advice

ANNUAL RETURN

FROM BCF'S INVESTMENT ADVISOR

In times of economic change and uncertainty, BCF's investment strategy stands out for its resilience. Together, with Guardian Partners Inc., the Foundation has constructed a portfolio designed to be "all-weather," capable of performing well regardless of market conditions. BCF has 35% of its endowed assets invested in alternatives strategies, which are non-publicly traded investments beyond traditional stocks and bonds. The portfolio's focus on alternatives strategies has led to less volatility relative to its broad market benchmark and strong absolute returns.

BCF's endowed assets earned an **annual return of 8.5%** in fiscal year 2024/25, against the annual goal of 8%, established by the Burlington Community Foundation's Investment Committee. Since Guardian Partners Inc. and BCF started working together in 2020, the endowed portfolio has earned an **annualized return of 9.8% over the 5-year period.**

A copy of BCF's Investment Policy Statement can be found at www.BurlingtonFoundation.org.

Andrew Dimock, CFA

Vice-President, Investment Counsellor
Guardian Partners Inc.





25 YEARS OF *Community*



Throughout 2024, we marked 25 years as the city's trusted philanthropic partner. To mark this milestone, we gathered together in celebration and reflection. We joined BurlingtonGreen for a community beach cleanup and made a \$2,500 unrestricted grant to support their environmental stewardship efforts across Burlington, and we came together for an evening of gratitude in November, in partnership with the Art Gallery of Burlington.

During the celebration at the AGB, which brought together generous fundholders and charitable partners, we saw firsthand the contributions organizations across Burlington are making through

performances by ArtHouse Halton, and youth from the Burlington Symphony Orchestra.

In recognition of each performer and partner, the Pieczonka Family Foundation Fund presented the Art Gallery of Burlington, ArtHouse Halton and the Burlington Symphony Orchestra with an unrestricted grant of \$5,000 each.

It was a year of wonderful celebration that acknowledged the dedication, commitment and foresight of Burlington Community Foundation's founding members, while setting the stage for the next 25 years of community impact.

COMMUNITY PRIORITY AREAS IN 2024-2025



FOOD SECURITY



SOCIAL JUSTICE, INCLUSION & WOMEN'S SUPPORT



CHILDREN AND YOUTH



HEALTH, MENTAL HEALTH & WELLBEING

Our community is comprised of generous individuals who support the pressing and vital needs of Burlington, and of communities across Canada. This past year, the Burlington Community Foundation identified key Community Priority Areas that helped streamline our granting to meet the city's greatest and evolving needs. We identified Community Priority Areas such as: food security; health, mental health and wellbeing; social justice, inclusion and women's support (including intimate partner violence); and children and youth.

In this report, you will see examples of our grants in action and hear about just a few of the generous fundholders who made that funding possible.



**BURLINGTON
COMMUNITY
FOUNDATION**

COMMUNITY PRIORITY FOOD SECURITY

Student nutritional needs don't take a break on weekends, and that is where Food4Kids Halton steps in.

The organization, which has been operating for more than a decade, runs the Weekends Without Hunger program, which provides bags of dietary and culturally appropriate food to children in need of nutritional support on weekends.

The program was supported with a \$15,000 grant from the Burlington Community Fund, which meets the city's greatest and evolving needs.

During the summer months when students are not in school, the program provides families with gift cards to help meet their needs. Currently, the program is serving more than 1,200 children across the Halton Region, with more than 350 of those children being in Burlington.

"The majority of kids in our program, their parents are working, but are just struggling to make ends meet with this cost-of-living crisis," said Executive Director Jennifer Sully-Ferraro.

Each week, volunteers pack hundreds of bags for the weekend, and another set of volunteers transports the packages to schools where they are discreetly given to students in the program.

"We have an amazing community – Burlington really, really cares," Sully-Ferraro said.

She shared that one of the moms in the program said that getting a bag of food was like "getting a hug from the community."

"Knowing that people care and that they're willing to donate their time and resources to support her family and families in need, just means so much and gives people such hope."



“ We have an amazing community –Burlington really, really cares. ”

Food4Kids Halton Executive Director
Jennifer Sully-Ferraro

FOOD4KIDS.CA

- ✉ Info@Food4KidsHalton.ca
- ☎ 905-469-3113
- 📍 4391 Harvester Road, Unit 3
Burlington, ON L7L 4X1

 **\$81,400**

Total amount granted to support the
Community Priority Area of Food
Security in 2024-25

COMMUNITY PRIORITY HEALTH, MENTAL HEALTH & WELLBEING

Those dealing with mental health concerns need support, and so do their caregivers.

At the Canadian Mental Health Association (CMHA) of Halton, the Family Matters Program is filling this important need by offering free workshops for caregivers of adults with mental health conditions.

"When one person in a family lives with mental health and/or addiction concerns, the whole family is impacted," says Melanie McGregor, Manager, Quality and Health Promotion with CMHA Halton. "Supporting caregivers' wellness will in turn improve their ability to care for others and help reduce pressures on the healthcare system and more intensive and costly services."

The program, supported by a \$10,000 grant from the Burlington Community Fund, helps caregivers learn about stress management, healthy communication, and caregiving impacts.

Surveys conducted before and after participation in the program show a 53% improvement in feeling that they have the tools to cope with their stress and a 42% improvement in awareness about the importance of taking care of themselves.

"The program has given me a completely different outlook on daily living," shared one participant. "I'm coming to terms with means of handling difficult situations. I'm entering issues much more at ease knowing I have tools to help keep my stress/anxiety at bay. This helps me to keep focused and prioritized."

CMHA Halton offers a broad continuum of services, including information and referral, peer support, group programs, clinical treatment services, crisis support, and service coordination. If you or someone you know are looking for support, please reach out.



“ The program has given me a completely different outlook on daily living. ”

Family Matters Program participant

HALTON.CMHA.CA

- ✉ Info@cmhahrb.ca
- ☎ 1-877-693-4270
- 📍 1540 Cornwall Road, Unit 102
Oakville, ON L6J 7W5

 **\$249,652**

Total amount granted to support the
Community Priority Area of Health,
Mental Health & Wellbeing in 2024-25



AGENCY FUND SPOTLIGHT

BURLINGTON TEEN TOUR BAND BOOSTERS INC. FUND



The Teen Tour Band has been a valued institution in Burlington for more than 75 years. However, it's not just musicians who help create the impactful legacy of the organization.

The Teen Tour Band Boosters provide parent/guardian volunteer chaperone support to the band for local parades and concerts, small regional tours and international tours. They also fundraise to offset the cost of participation, keeping the band inclusive and accessible for all.

In 2003, the Boosters established an agency fund with the Burlington Community Foundation, providing the organization with a sustainable annual revenue source.

"We started the agency fund with the Burlington Community Foundation as we had some donors that wanted to know that their gift would have a long-lasting legacy for the future rather than being consumed in short order," said 2025 President Steve Butterworth. "It also allowed us to set up a source of donations that would cover our basic operating costs."

Butterworth said the organization is comprised 100% of volunteers and the annual grant generated by the agency fund covers basic operating costs, allowing all other fundraising to support keeping tour costs low and accessible for band members and their families. Being associated with BCF also raises the profile of the Boosters in the community, he said.

For supporters who want to know that their support will leave a legacy for the future of the Boosters, the BCF agency fund will give them that assurance.

"Having the fund managed by the BCF is highly valued as it is difficult to do so in a volunteer organization that has board turnover," Butterworth said. "This way we know the funds are well managed and safeguarded."

To learn more about the Teen Tour Band Boosters and their mission, visit www.teentourboosters.com.

AGENCY FUNDS HELP PROVIDE SUSTAINABILITY

Local charities, known as Agencies, choose to establish an Endowment Fund to help support the sustainable operations of their mission. Burlington Community Foundation is proud to partner with the following local Agencies to support the stewardship of their Agency Funds.

- Art Gallery of Burlington Fund
- Burlington Food Bank Fund
- Burlington Museums Foundation Fund
- Burlington Public Library Permanent Endowment Fund
 - Mae Beatrice Broadbent Fund
 - Millicent McEwen Fund
 - Wendy Schick Fund
 - Margaret Clay Fund
- Burlington Teen Tour Band Boosters Inc. Fund
- Carpenter Hospice Endowment Fund
 - Walter and Louise White Fund
- Community Living Burlington Fund
- Conservation Halton Foundation Fund and Green Values Fund
- Halton Women's Place Fund
- RBG Endowment Fund – Dan Lawrie International Sculpture Collection
- United Way of Halton & Hamilton Tomorrow and Forever Fund



“ Having the fund managed by the BCF is highly valued as it is difficult to do so in a volunteer organization that has board turnover. ”

2025 President Steve Butterworth

LEGACY GIFT SPOTLIGHT



HELEN DODDS

Throughout her life, Helen Dodds cared deeply about charitable causes.

She was an animal lover and sports fan who supported charities, including those related to animals, heart disease, and lupus, from which she suffered.

When she passed away last year, Helen showed her love for her community and for charitable giving through a generous \$25,000 planned gift, left to the Burlington Community Foundation in her will.

“She was a philanthropist,” shared her niece, Carrie Collins, who was the executor of her will. “She sent a lot of charitable monies here and there and that was something that was always really important to her, giving back — not just to her immediate community, but to the world community too.”

Helen spent many years living in Aldershot, a place Carrie believes her aunt thought was “just the loveliest neighbourhood in the world.”

When Helen passed away last year, Carrie reached out to the Burlington Community Foundation to realize Helen’s wish of a legacy gift.

She said her aunt was “not somebody who waved her own banner,” but would be proud that she had an impact and that Carrie was speaking about her.

“The whole Burlington community will benefit hopefully from her gift in one way, shape or form and that’s I think what is most important,” Carrie said.

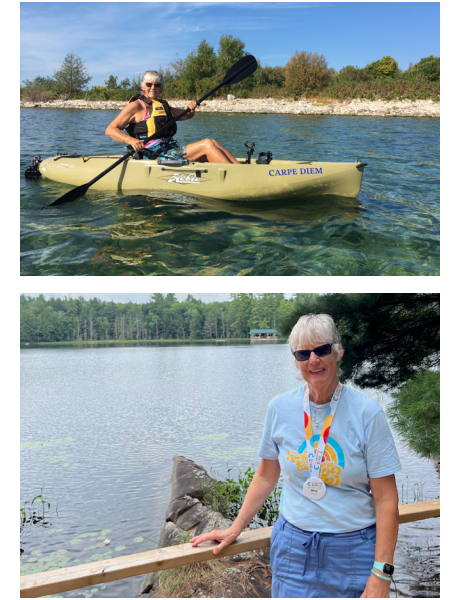
Throughout the years, community members have supported the Burlington Community Foundation through bequests, including Helen’s.

If you are interested in discussing leaving a legacy gift, you can share your wishes with your family, discuss options with your financial planner, or reach out to our team at 905-639-0744. Legacy gifts offer a way for individuals to support causes they care about, while making a continued impact in their local community.

“The whole Burlington community will benefit hopefully from her gift in one way, shape or form and that’s I think what is most important.”

Carrie Collins, Helen’s niece

FUNDHOLDER SPOTLIGHT



MARGARET DEVITT

Fundholder Margaret (Marg) Devitt’s route to the Burlington Community Foundation was a journey.

Several years ago, her financial advisors suggested she meet with estate planners, who then directed her to BCF to consolidate her charitable giving through a donor advised fund.

“My list of charities was far-reaching in that it included local as well as international causes, and the Burlington Community Foundation helped me to streamline my giving,” shared Marg.

After starting a (short) Term Fund with the Foundation, which allowed her to receive a single tax receipt for all of her donations and greatly ease her bookkeeping, Marg decided to create a permanently endowed fund with BCF.

Term funds allow donors to provide grants during a 10-year period from funds that are not part of BCF’s endowed investment pool. Endowed funds provide a sustainable, annual return that can be used to support charitable causes in perpetuity.

Initially, Marg was reluctant to consider an endowed fund because she did not want to leave her family with the responsibility of managing it when she was gone. However, after learning

more about how endowed funds work, she decided it was the right choice.

Now, Marg utilizes both funds to meet her annual and long-term giving goals.

“Knowing that I can continue to make an impact on causes that mean so much to me long after I leave this world, is a genuine comfort,” she said. “The fact that there is no burden to my family is an added bonus.”

Each year, Marg thoughtfully selects charities to support, intentionally seeking where her grants will have the most impact. As a former teacher, childhood education and welfare are important to her, as are nature and animal life. She also supports health and wellness, including local hospitals, research centres, and camps for children with cancer.

“Even though I live out of the area, in Waterloo Region, I can still support the vision of the Burlington Community Foundation while it supports the causes near and dear to me in my own region and internationally, through my funds,” said Marg.

“It is a win-win collaboration.”

FUNDHOLDER SPOTLIGHT



BRIAN AND VIRGINIA WEATHERDON

Brian and Virginia Weatherdon know the importance of nutrition and learning skills to promote wellbeing through culinary knowledge. That is why their family started the Weatherdon Fund for Early and Lifelong Nutrition with the Burlington Community Foundation.

The Weatherdons create positive community change through their fund, which aims to advance simple and strategic food skills in the home and in the community. These skills can then be shared and replicated easily among friends and next generations.

This past year, the Weatherdon Fund for Early and Lifelong Nutrition was instrumental in working with the Burlington Community Foundation to fund the Heritage Garden at Ireland House Museum.

Started during the COVID-19 pandemic, the garden is maintained by students from M.M. Robinson High School and all food grown is donated to community partners, including the Burlington Food Bank. The garden is a project that encourages youth engagement through skill development, while supporting food security — meeting two important needs in our community.

The Burlington Community Foundation was able to provide partial funding for the Heritage Garden from its Burlington Community Fund last fall. However, more funding was still required. That is when Brian and Virginia Weatherdon stepped in with a grant from Weatherdon Fund for Early and Lifelong Nutrition.

“We are very aware of the urgent ongoing need met by food banks and related sharing,” shared Brian. “Our focus reaches out today and for the future, to enhance how families can grow, preserve, and optimize nutrition even on a restricted budget. Our Community Foundation partners work wonderfully with us to identify groups who can share and implement our vision.”

Thanks to the generosity of the Weatherdons, the Heritage Garden will continue to have a positive impact in the local Burlington community, empowering youth with critical life skills that can be taught to future generations.

“Our Community Foundation partners work wonderfully with us to identify groups who can share and implement our vision.”

Brian Weatherdon



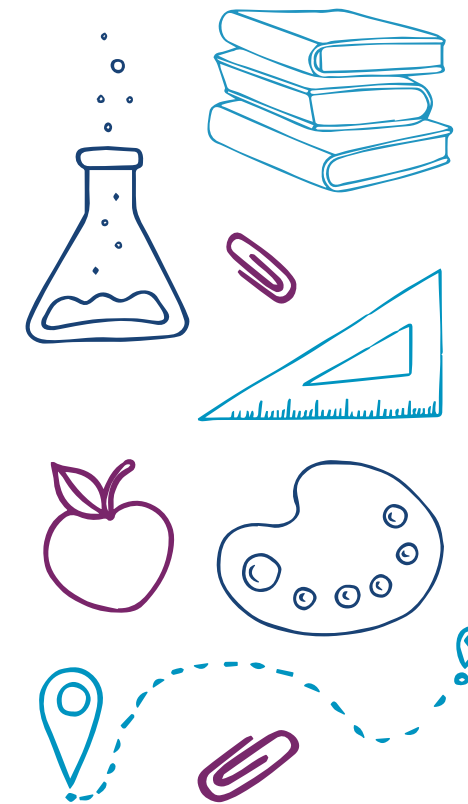
SCHOLARSHIP FUNDS

INVESTING IN YOUTH

Education is a key part of making an impact in the community and the Burlington Community Foundation is proud to hold several Scholarship Funds to enhance opportunities for our city's youth.

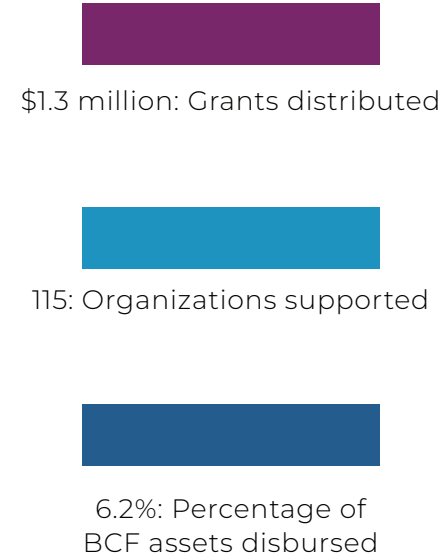
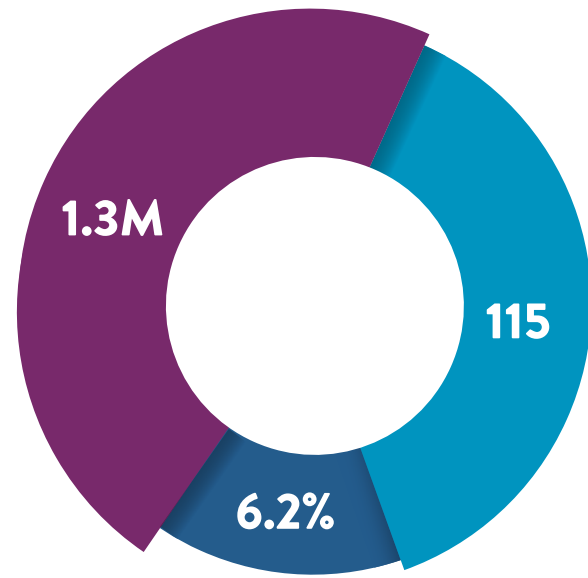
One award is the Women's Advancement Scholarship, which was created from the legacy of the Junior League of Hamilton-Burlington. BCF administers the annual award, which was created in 2022. It is presented to female-identifying students who show academic excellence, involvement in school activities, and volunteer work in the community.

Currently, students at three Burlington high schools benefit from funding provided by this scholarship, which provides them with a financial boost as they pursue post-secondary education.



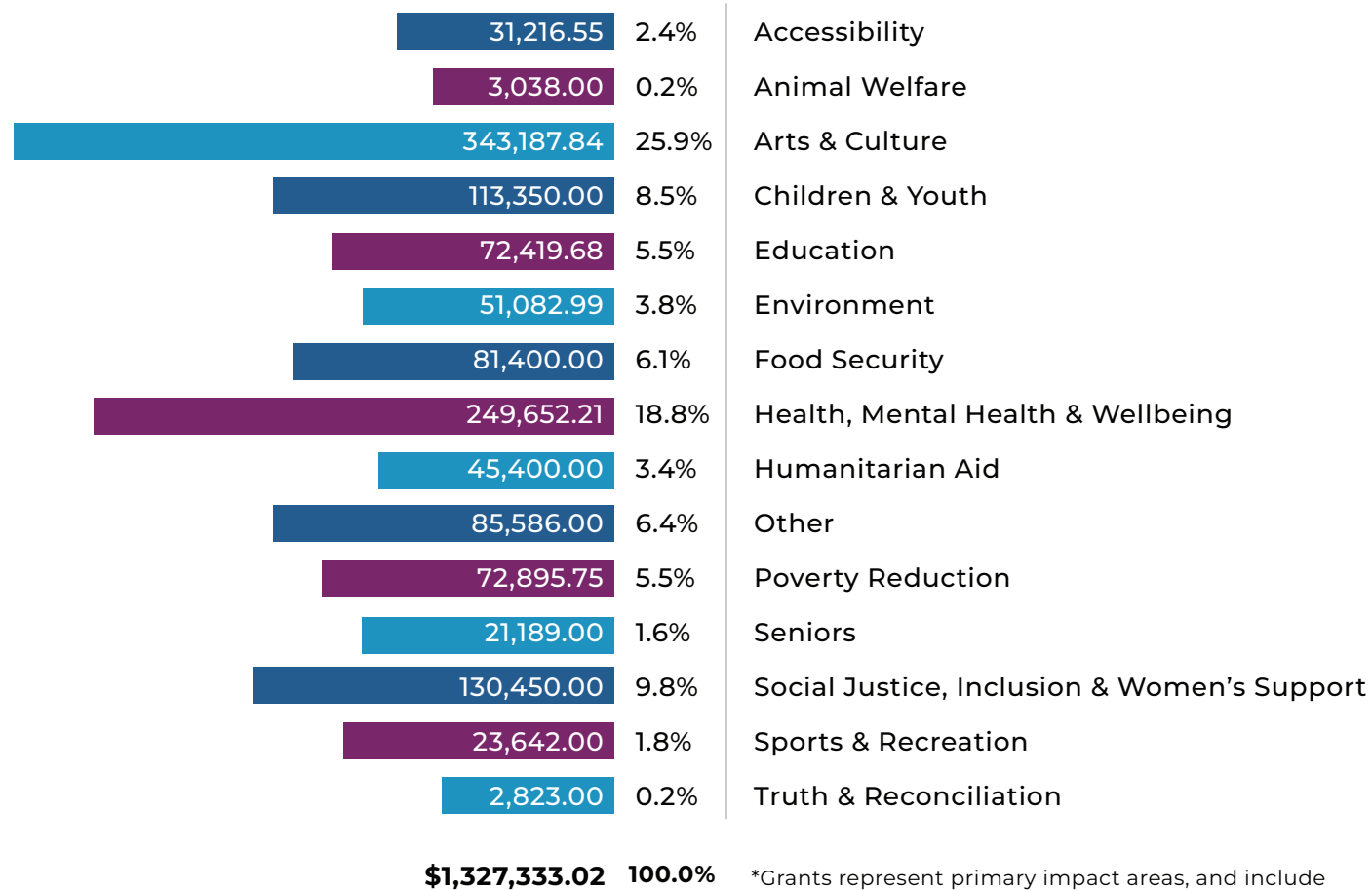
Businesses, organizations and individuals interested in starting a Scholarship Fund can contact the Burlington Community Foundation at Info@BurlingtonFoundation.org or 905-639-0744 for more information.

FISCAL 2024-25: BY THE NUMBERS



For a full list of grants made in 2024-25, visit www.BurlingtonFoundation.org to view our financial statements for the fiscal year ending March 31, 2025.

*GRANTING IMPACT AREAS



*Grants represent primary impact areas, and include both donor advised and Foundation directed.

FUNDS HELD AT BURLINGTON COMMUNITY FOUNDATION

People come to our Foundation to learn how to make a difference in the community. It begins with the simple act of caring. Our team works with individuals and businesses to build a generosity plan aligning with their vision. This often includes giving to an existing fund, or establishing their own unique Endowment Fund, ensuring the impact of their generosity is felt in perpetuity across Burlington.

Our Foundation has a wide range of funds to choose from that suit your interest. We have flexible fund options that allow donors to name a fund at a certain minimum level. Many consider establishing a fund in their own name, as a family, or to honour someone they care about. The following is a list of funds that the Burlington Community Foundation holds, created by community-minded citizens, organizations and businesses.



OUR LEGACY OF IMPACT

5 NEW FUNDS CREATED IN 2024-25

120+ NUMBER OF FUNDS HELD AT BCF

\$12.7 MILLION GRANTED SINCE INCEPTION IN 1999

\$25.7 MILLION TOTAL ASSETS HELD BY BCF

DONOR ADVISED FUNDS

(INCLUDING DONOR DESIGNATED, FIELD OF INTEREST AND COMMUNITY)

- Basadur Family Foundation Fund
- BDO Burlington Community Fund (Endowed and Term)
- Beatrice McDonough Family Foundation Fund
- Bette and Keith Munro Foundation Fund
- Beverley and Walter Mulkewich Community Development Fund
- Birbari Wealth Management Fund
- Brechin, Huffman and Henderson Fund
- Burlington Community Foundation Impact Fund
- Burlington Community Fund
- Burlington Community Youth Advancement Fund
- CLV Group/InterRent REIT Philanthropic Fund
- Crawford Lake Fund
- Creative Results for Kidz Endowment Fund
- Dalton Timmis Group Fund
- Dan Lawrie Family Foundation Fund (Endowed and Term)
- DanceScape Endowment Fund
- David Bruce Sergeant Fund
- Dewitte Family Fund
- Dr. John and Jennifer Bozek Family Fund
- Dunsford Family Term Fund
- Erica & Pat Smith Fund
- Ethel and Roly Bird Fund
- Eva and Lloyd Utter Memorial Fund
- Fontaine Family Fund (Endowed and Term)
- Foxcroft Family Fund
- Frank Allison Foundation Fund in Loving Memory of his Mother, Olga Allison
- Friends of Heritage Burlington Fund (Endowed and Term)
- Gurplean & Marianne Singh-Waraich Fund
- GWD Foundation for Kids
- H. Fred Janson Fund for the Developmentally Handicapped
- Haggerty/Durocher Fund
- Halton Heroes Fund (Endowed and Term)
- Hamilton Family Fund
- Healthy Reflections Canada Fund (Endowed and Term)
- Helen Zdriluk Memorial Fund for the Performing Arts (Endowed and Term)
- Hogarth Family Foundation Fund
- James Paton Heron Fund
- Jean Ellen Griffin Fund
- Joyce Cooper Foundation Fund
- Kempe Family Fund
- Kimberley Kovalchek Legacy Fund
- Leggat Family Fund
- LKH Legacy Fund
- LKH Spirit Fund
- Lorraine and Andrew Smith Community Fund
- Louise Cooke Fund for the Visual and Performing Arts
- Love, Jayne Foundation Fund
- Marsh Family Fund
- Mayor's Gala Fund
- Mayor's Green Fund
- M.E. Devitt Term Fund
- Mental Wellness Fund
- Milne Family Foundation Fund (Endowed and Term)
- Nelson and Gary Allan Fund
- Nicholas Hurlbut Memorial Fund
- Now I Can Children's Fund
- Ontario Endowment Fund – Child & Youth in Recreation
- Pasquale (Pat) and Anita Paletta Foundation Fund
- Paul Hansell Foundation Fund

- Performing Arts Burlington Fund
- Performing Arts Youth Endowment Fund
- Pieczonka Family Foundation Fund
- Pioneer Group Term Fund
- Plains Road Village Vision Fund
- Ralph and Susan Sgro Family Fund
- Randy and Denise Reeve Family Fund (Endowed and Term)
- Reddon Family Fund
- Robert D. Gould Foundation Fund
- Robert West Fund
- Ruth Milne Fund (Endowed and Term)
- Sarah and Donald Munro Memorial Fund
- Smiling Hearts Foundation Fund (Endowed and Term)
- Smith Family Fund
- Susan Marcus Foundation Fund
- Sydney Robis Memorial Fund
- Uffelmann Family Foundation Fund
- Valley Fund
- Vaski Family Performing Arts Fund
- Wealthbuilding Foundation Fund
- Weatherdon Fund for Early and Lifelong Nutrition
- William and Susan McGregor Fund

SCHOLARSHIPS, BURSARIES AND AWARDS

- Aldershot School Fund
- Burlington Chamber of Commerce Scholarship Fund
- Burlington Economic Development Corporation Mayor's Apprenticeship Fund
- Burlington Medical Society Scholarship Fund
- Cheryl Miles Goldring Foundation Fund
- Lawrence Sinclair Scholarship Fund
- Legacy of The Junior League Hamilton-Burlington Inc. Fund
- Mario Rende Scholarship Fund
- Matthew C. Daly Scholarship Fund
- Mayor Rick Goldring Scholarship Fund
- SB Partners Scholarship Fund

NEW FUNDS

THE FOLLOWING FUNDS WERE ESTABLISHED IN 2024-2025

- Anonymous Family Fund
- Brechin Family Community Fund
- Jayne's Impact (Term) Fund
- M.E. Devitt Endowment Fund
- RBG Endowment Fund – Dan Lawrie International Sculpture Collection

Every effort is made to ensure the full accuracy of fund lists.
Please reach out to our team at 905-639-0744 to provide a correction.

ABOUT US



“ We're humbled by the impact we have achieved over the past year, in partnership with generous donors and fundholders. Together, we are strengthening Burlington and communities across Canada. ”

-MEGAN TREGUNNO, CEO



OUR VISION FORWARD

An informed, engaged and generous community, working together in support of a resilient and inclusive Burlington for all.



OUR PURPOSE

We are dedicated to advancing community well-being and belonging, by connecting generosity and resources to meet evolving local needs.



OUR VALUES

The Burlington Community Foundation is guided by Collaboration, Transparency, Innovation, Inclusivity, and Adaptability in everything we do.

STRATEGIC PLAN GOALS 2025-2028

GOAL#1

Inspire philanthropy in Burlington as our city's giving & generosity hub.

GOAL#2

Mobilize Foundation assets to deepen community impact.

GOAL#3

Deepen our commitment as a charitable thought leader by activating community around collective action.

In the next year, the Burlington Community Foundation will continue to strengthen our community partnerships, deepen our commitment to collaborative action, and continue to provide insight as a charitable thought leader in the city.

In the fall of 2025, we will release our Connected Community: Burlington's Vital Signs 2025 report, which will take a hyper-local, timely snapshot of how we connect as a community and where there are opportunities to enhance that connection. As we move forward into our next decade, we do so knowing the importance of information, engagement, and connection in building a community where everyone can thrive.

The Burlington Community Foundation is our city's giving and generosity hub. Established in 1999, we have been Burlington's trusted philanthropic partner for more than 25 years as one of more than 200 community foundations across Canada. We manage charitable gifts from donors whose generosity allows us to create permanent, income-earning funds. The proceeds from these funds are then distributed as grants for charitable or educational purposes. To date, the Burlington Community Foundation has invested more than \$12 million in people, projects, and non-profit organizations that strengthen Burlington and communities throughout Canada.

How Burlington Community Foundation Works



Burlington Community Foundation is a charitable, non-profit organization that has a long and trusted history of contributing time, leadership and financial gifts to charitable initiatives that benefit our community the most.

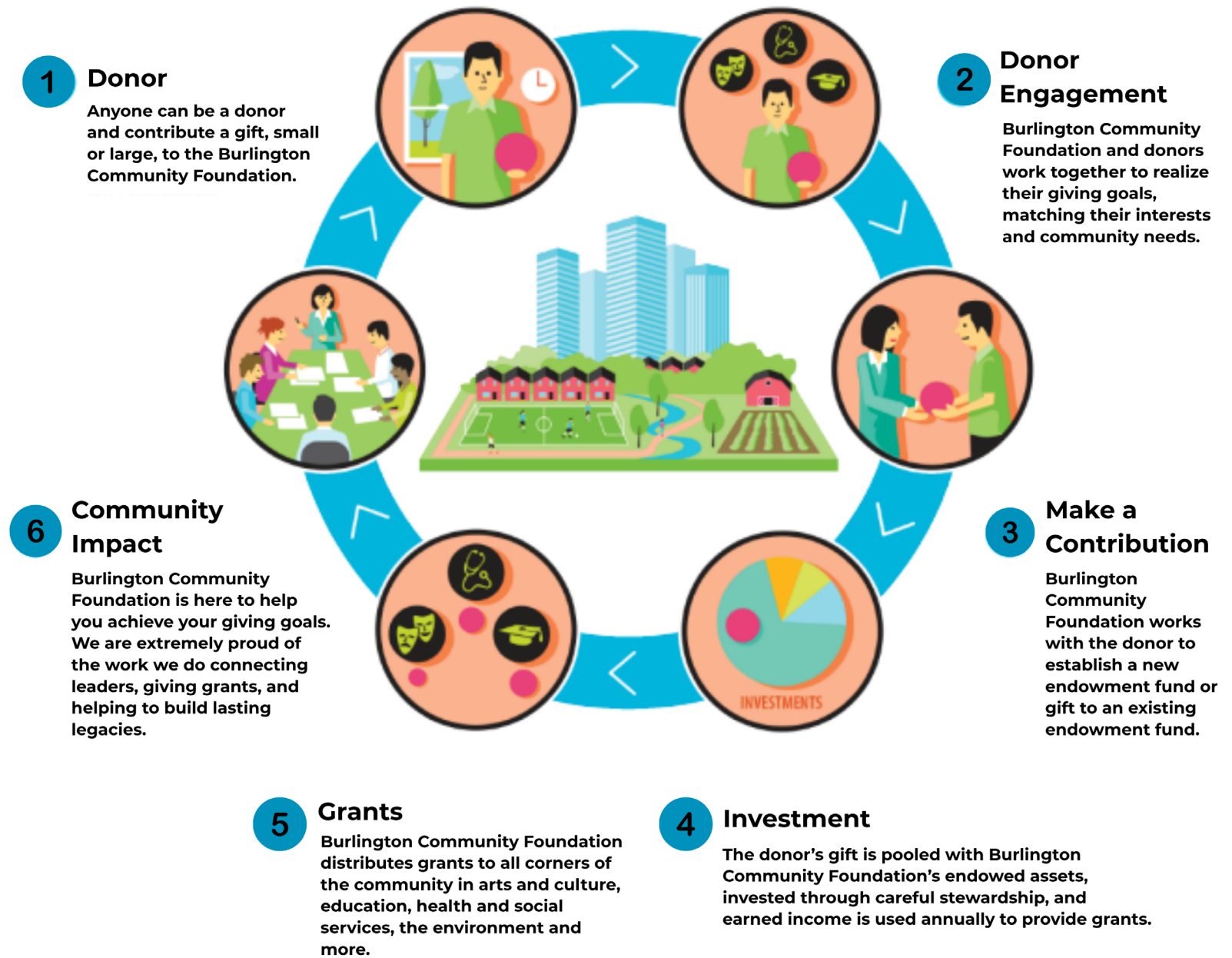


Diagram provided by




OUR TEAM


Megan Tregunno, CFRE
Chief Executive Officer
905-639-0744 ext. 2
MTregunno@BurlingtonFoundation.org


Dana Brown
Communications & Grants Associate
905-639-0744 ext. 1
DBrown@BurlingtonFoundation.org

Finance Inquires
Finance@BurlingtonFoundation.org

CONTACT US


 Burlington Community Foundation

 Physical: 901 Guelph Line
Burlington, ON L7R 3N8


 Mailing: PO Box 91590
RPO Roseland Plaza
Burlington, ON L7R 4L6

 BurlingtonFoundation.org

 Info@BurlingtonFoundation.org

 905-639-0744

 @BurlingtonFoundation

 Charitable Registration
#857812739 RR 0001

Thank You

Our sincere gratitude and heartfelt thanks to all the people who make the work of the Burlington Community Foundation possible. We appreciate our volunteers, Board of Directors, donors, funders, fundholders, community organizations and committees. We could not do our impactful work without your dedication, time, loyalty, and financial contributions. Your desire to help those in need in our community is truly priceless.

Thank you to our corporate and family foundation partners for your generosity throughout the year.



**Pieczonka Family
Foundation**

**The Pioneer Group &
The Hogarth Family**