



2022-2023

# A YEAR OF COMMUNITY RESILIENCE & COLLABORATION



ANNUAL COMMUNITY REPORT

# MEGAN TREGUNNO

PRESIDENT & CEO

**2022/23** was a transformative year of community resilience, collaboration, and a steadfast commitment to shaping the future of the Burlington Foundation. Building on our 24 years of leading social progress and change in Burlington, we continued to listen and learn from the many important insights gained from our community.

After years of being apart due to COVID-19, the need for belonging and a sense of community has never been greater. In just a few months as CEO, supported by an exceptional team and a dynamic Board of Directors, we have already witnessed tangible progress toward our collective aspiration of becoming a fully mobilized community foundation - a foundation that stands firmly with and for the community we serve.

Balancing the commitment to meet community needs through grants, and ensuring the long-term growth of the Foundation's assets remains a top priority.

This past year was unusual given the declines in both global equity and fixed-income markets. Central banks raised overnight rates multiple times to combat inflationary pressures. This resulted in interest rates and bond yields rising across the globe which had a negative impact on the prices of both stocks and bonds. Despite these challenges, the Foundation's portfolio fared well. Overall, the Foundation realized a 2% return in our April 2022 – March 2023 fiscal year. We attribute this success to our "all weather" investment philosophy – a portfolio that is structured for long-term, absolute returns in different market environments – which proved effective even in a year marked by significant turbulence.



“ Every day that I come into work, I am filled with a sense of excitement about what the day will hold. What stories I’ll hear and new connections we’ll make within our community. ”

The Foundation granted \$895,790.03 and, along with our charitable activities, the Foundation's total disbursement was 4.63%, compared to the 3.5% Disbursement Quota mandated by the government. Our Investment Committee Chair, Tim Cestnick shares more about Burlington Foundation's resilient investment strategy in this year's report.

Throughout my career, I have been continually inspired by what we can accomplish when we come together through human connection and collective action. I also acknowledge and understand how the philanthropic sector needs to evolve – from what inspires people to act, how people give, to who is missing, to how we need to break down systemic structures historically designed to leave people out. Returning to where I grew up, where I am raising my own family, fills me with joy, as I draw upon my leadership experience to effect profound and necessary change right here at home.

Burlington has undeniably undergone significant transformations and continues to evolve. Our population burgeons with diversity and vibrancy while our physical spaces adapt to embrace this thrilling growth. Yet, beneath the surface, we confront challenges once associated only with larger cities. Homelessness, a scarcity of affordable housing, the pervasive issue of food insecurity, mounting mental health pressures, and the strain on our environment due to growth may sometimes overwhelm us.

However, the Burlington Foundation stands resolute as a beacon of support and guidance, assisting community members and organizations in navigating these complex issues and striving for positive outcomes.

Crafting our Foundation's vision forward necessitates engagement, advocacy, and inclusivity, enabling us to hear the broad community's ideas, concerns, and solutions. The people of Burlington possess an unparalleled understanding of its needs, and it is our responsibility to provide a platform for listening and support.

My team and I stand as stewards of these vital discussions, facilitating outcomes and championing decisions that serve the best interests of our community. Our unwavering focus in 2023 and beyond will be community engagement and collaboration. To effectively support our work, we are evaluating what is needed for our Foundation to evolve in sync with the speed of our community. We aim to be agile and proactive in our endeavours by modernizing our efforts and investing in our growth by prioritizing tools and technology to support our donors and fund holders to enable their generosity planning.

Over the next few years, we have an incredible opportunity to rally our community together, establishing Burlington Foundation

as its central hub for engagement and action. We will lead the charge alongside those driven to effect change, partnering with charitable organizations at the forefront of this transformative journey.

I am thrilled to share several inspiring community impact stories from across this past year with you in this year's report. And I am even more excited to continue supporting these endeavours and countless others through the boundless generosity of our funders and community members.

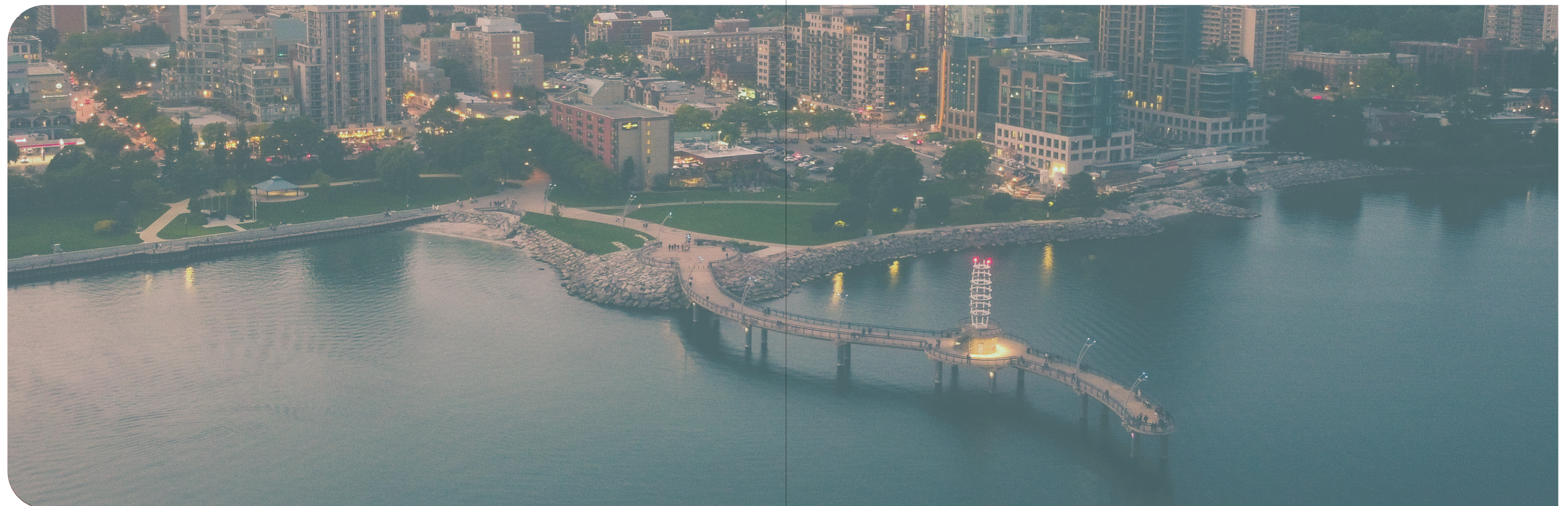
I extend my heartfelt gratitude to our Board of Directors, led by the exceptional Catherine Brady, our Chair, and my esteemed Foundation team member, Osob Adus, Director of Grants & Community Engagement. Your unwavering dedication to our community, is an invaluable gift that uplifts us all.



With great enthusiasm and determination, we forge ahead, building a stronger, more connected Burlington through the strength of our Foundation.

**THANK YOU, BURLINGTON,**  
FOR YOUR CONTINUED SUPPORT  
IN MEETING THE NEEDS OF OUR  
COMMUNITY. TOGETHER, WE WILL  
BUILD A CONNECTED COMMUNITY  
WHERE EVERYONE BELONGS.

 **CLICK HERE!**



# OSOB ADUS

DIRECTOR, GRANTS &  
COMMUNITY ENGAGEMENT

Building a strong community is like building a strong family: it takes a group of people who care. I've learned this through my extensive career in the not-for-profit sector, where engagement and deep intra-community relationships are at the core of the organization's success.

I have lived in Burlington for over 25 years and raised my family here. I love and appreciate our city's community, connections, and openness. I have also seen the shift in the demographics of Burlington, and I am excited about how the Burlington Foundation is evolving to meet our city's diverse and critical needs.

From a city which ranked first for Best Community in Canada 2019 by Maclean's magazine, Burlington receives high scores for its excellent quality of life, prosperous economy, and enviable location. Burlington was not only ranked the best community but was also ranked as the Best Place to Raise a Family by Maclean's **(BURLINGTON RANKED THE BEST COMMUNITY IN CANADA - MUNICIPAL WORLD)**. While we take great pride in this city ranking, I believe we need to pause and ask: how are we all really doing? Are our citizens well? How would they describe their well-being today? I believe our community thrives and supports one another by building relationships and a foundation of unity to address the needs of our community. To me, this is what a connected and prosperous community looks like.



“To meet the needs of our evolving community, we first must be in relationship with each other.”

Our shared vision of building a community-led Foundation inspires me daily. I know the work we are doing to advance social progress by doubling down on establishing relations to empower our Foundation and increase community impact for our city of Burlington in the ways it needs the most.

In my role, I view philanthropy as giving in any way someone can – money, time, or other resources to share. No matter what form, the gift must be beneficial for the community's common well-being in addressing emerging needs proactively. Gifts and grants work together to make improvements to the daily lives of our community members at large. I am honoured to be able to put my lived experiences into relationships and action.

As a team, we will continue to work to improve the awareness and accessibility of the Foundation so that more people and funders can become involved and help create a sense of economic prosperity for everyone and collectively meet the growing needs of the Burlington community.

Burlington is a robust and vibrant city made up of people who care about others. I am proud to do the work I do to galvanize our collective passion and, together, make a lasting impact on our community.

# CATHERINE BRADY

CHAIR, BOARD OF DIRECTORS

I am a proud Burlingtonian and an even prouder Board Chair of the Burlington Foundation. Being passionate about my city led me to become involved in the Foundation over 20 years ago. And now, being engaged in conversations and actions to make our city a better place for all those who call it home is continually inspirational.

I believe in the work of the Foundation because I have seen its important impact over the years. My favourite story is that of a grant of \$750 made to a agency here in Burlington. Although this may seem a small amount to many, it allowed them to replace an outdated printer/ photocopier and significantly impacted their continuing ability to share their message and serve their community.

Giving to an organization such as ours contributes to the ripple effect of change and action throughout the city. No matter the amount, every donation creates an impact with the important organizations that have got boots on the ground, doing the work of supporting and giving through a variety of causes.

By giving back to your community, you are part of the ripple and create a more robust, caring population.



“ Philanthropy is giving what you can – time, treasure or talent. ”

A critical component to designing the Burlington Foundation's future is attracting more young people who can help steer our vision and make it relevant for our changing community. New representation on our Board and the Foundation staff team will allow us to engage a broader range of people and deliver the right impact that our multi-generational community needs.

I thank Megan and her team for their vision and outstanding leadership that will carry us forward through the next exceptional phase of growth and evolution. I would also like to thank our Past President and CEO, Colleen Mulholland, for her commitment to and stewardship of the Foundation over the past 12 years and trust that she is enjoying her retirement.

We are in a good place. Our Board is firmly committed to building our position in the community, and we are excited about the future of the Burlington Foundation.

*C. Brady*

# YEAR IN REVIEW



This past year was another year of transformation for our community. We continued to feel and see the impacts of the pandemic, and our fundholders and donors continued to respond with compassion and action. Together, we granted \$895,790.03 across Burlington and surrounding communities to 105 charitable organizations.

We also partnered with the Government of Canada to distribute vital dollars locally across Burlington, helping our charitable partners recover from the impacts of COVID-19 by investing in their teams, infrastructure, and new social enterprise programs that will provide sustainable funding for their organizations. [VISIT HERE TO READ MORE ABOUT THESE SPECIAL RESPONSIVE GRANTS.](#)

Our community foundation's resiliency is in large part due to the foresight of our fund holders and the leadership of our Board and volunteers. People and corporations have chosen to partner with our community foundation for 24 years so that we can be there for our community today and tomorrow. There is no more significant time in our Foundation's history than the past several years that exemplifies our critical role as a leader, partner, and change-maker in Burlington. This is work we hold with great responsibility and pride.

Social connection is at the core as we draw on the learnings from this past year and look ahead to how we must evolve along with our community. Building a more connected Burlington for the future takes determination, teamwork, and collaboration.

Our team at the Burlington Foundation is committed to working together in the truest sense to create more connection and engagement.

A vital program component we implemented in March 2023, was our Community Conversations: inviting a cross-section of community members to come together for authentic discussions about various issues and the needs and gaps in Burlington. Together, we are creating brave and connected spaces.

By creating a community-led vision, we must engage in open dialogue to gather feedback and ideas that help us to steward funding decisions in the right places.

We are creating deeper relationships with the organizations that serve Burlington. These charitable organizations are in the thick of many issues that affect the community, and we are committed to helping them serve those who need it the most through funding leadership and accessibility. We will continue working with funders and donors to close the financial gaps that local organizations face.

We also continued our work in legacy building for those who want a more sustainable approach to giving. Deepening this area for the Foundation is important to create more awareness of how people can provide longer-term to their community.





# GRANTING TO COMMUNITY

- ✔ Number of Charitable Organizations Supported: 105
- ✔ Total Grants Awarded: \$895,790.03 (includes pandemic relief funding)
- ✔ Total Grants Awarded since inception (1999): \$10,153,301.69

Last year, Burlington Foundation made 105 grants totaling **\$895,790.03**. These grants have made an incredible impact on our Burlington community. The following organizations received grants in 2022/2023.

For a complete view of 2022/23 grants and amounts, please see our full grant listing in our [AUDITED FINANCIALS HERE](#). This report includes grant highlights and stories from local organizations leading change through Burlington Foundation grants over the past year.

# GRANTS IN ACTION



We are proud to have made contributions that have actively impacted the betterment of people living in the Burlington community. We are pleased to share a few highlights of programs that received grants from Burlington Foundation in the past year.



# BurlingtonGreen

Together we make a difference



## BURLINGTONGREEN

Through awareness, advocacy and action initiatives, we work with all sectors to protect the environment, mitigate climate change and create a healthier, more environmentally responsible Burlington. Since 2008, BurlingtonGreen has been intentionally engaging youth in our mission and launched a Youth Network. Funding received from Burlington Foundation over this past year helped to grow youth involvement..

### Community impact from Burlington Foundation funding

- Engaged 72 new young people as environmental stewards (ages 14-24).
- Created social connection through the network, helping to lessen climate anxiety – a real and gripping concern for young people as they look towards their futures.
- Helped young people develop new transferable skills such as public engagement and social media content creation about the environment; increased their environmental awareness on topics such as waste diversion and invasive plant identification.
- Deepened involvement from youth across the city of Burlington through new student eco-opportunity partnerships such as with the Halton Catholic School Board, Conservation Halton, Royal Botanical Gardens and more.

“As someone who has an interest in the environment, I always felt like I was not doing enough, and I had no knowledge about other environmental issues besides climate change. The BGYN has given me the opportunity to start somewhere.”

[BurlingtonGreen Volunteer](#)

## BURLINGTONGREEN.ORG

- ✉ Bg@BurlingtonGreen.org
- ☎ 905.975.5563
- 📍 1094 Lakeshore Rd Burlington ON

- 🐦 BurlingtonGreen
- 📘 BurlingtonGreen
- 📷 BurlingtonGreenEnv



COMMUNITY LIVING BURLINGTON

Established in 1955, Community Living Burlington is the largest and oldest non-profit organization in Burlington. They currently provide support to over 400 people in our community who have a developmental disability.

Their mission is to enhance the quality of life and promote full and meaningful inclusion in our community. They achieve this by offering a comprehensive range of programs, services, and supports tailored to the unique needs of each person they support, ensuring that every individual reaches their full potential.

Community impact of Burlington Foundation funding

The funding received has made a significant impact on the community. Donations to CLB not only enable the people supported by Community Living Burlington to lead fulfilling lives but also provide them with invaluable opportunities for inclusion. These opportunities allow individuals to share their unique talents with the community, fostering a sense of belonging, connection, and empowerment.

“The people we support make valuable contributions to the Burlington community through their active participation in employment, volunteering, and by exemplifying great citizenship. Their contributions not only enrich the lives of those directly involved but also promote a culture of support and collaboration that benefits the entire community.”

Judy Pryde, Executive Director

CLBURLINGTON.CA

- Icons for email, phone, location, and social media (Twitter, Facebook, Instagram) with corresponding contact information for CLBurlington.



FOOD4KIDS HALTON

Our mission is to provide healthy food packages for elementary school students with little or no access to food on weekends and throughout the summer. While we recognize that we cannot eliminate poverty or hunger in Halton, we would like to do our best to reduce its effects/alleviate its impact on elementary students who endure weekends without food by ensuring they are fed.

Community impact of Burlington Foundation funding

This grant assisted Burlington elementary school children living in homes experiencing food insecurity and helped relieve the impact of poverty on their families. Living with food insecurity can be very stressful. No family should be forced to choose between paying for expenses such as rent/mortgage, utilities and healthcare or feeding their child. Food4Kids Halton helps alleviate that stress by providing healthy food that arrives discreetly at each family’s home. Caregivers don’t need to commute to access a food program or stand in line to receive help. Help comes to them. With the support of this grant from the Burlington Foundation, 800 healthy bags of food were sent home with 150 Burlington children every weekend for six weeks.

“Thanks for reaching out to help my family through these tough times. Your support has helped tremendously ease some stress in our home.”

Food4Kids Friend

FOOD4KIDSHALTON.CA

- Icons for email, phone, location, and social media (Twitter, Facebook, Instagram) with corresponding contact information for Food4KidsHalton.





HABITAT FOR HUMANITY

HALTON-MISSISSAUGA-DUFFERIN

We want to build a world where everyone has a decent place to live. Our mission is to empower working lower-income families to build strength, stability, and independence by providing affordable housing that enables financial equity and lasting change.

Community impact of Burlington Foundation funding

The grant funded the Tiny Homes Build program in a few of Burlington's secondary schools. The program brought a unique hands-on building experience to secondary school students in skilled trade and construction classes. Under the instruction of school faculty and supported by the HHHMD Tiny Homes Project Manager, the students built tiny homes that are innovative solutions to the affordable housing issues in nearby Indigenous communities and partnership with three First Nations communities. This experience created a greater understanding of Truth & Reconciliation. To date, 11 homes have been built by approximately 400 Burlington students in Phase 1 and Phase 2.

"Tiny Homes provide an innovative solution to affordable housing as well as contribute to reducing our carbon footprint through their compact living space and sustainable features."

Habitat For Humanity

HABITATHM.CA

- Phone: 905.637.4446
Address: 1800 Appleby Line Unit 10 Burlington ON
Social: HabitatHMD, HabitatHaltonMississauga, HabitatHMD



OPEN DOORS AT ST. CHRISTOPHER'S

For nearly two decades, Open Doors at St. Christopher's has been offering various volunteer-driven outreach programs designed to meet the needs of community residents. Whether by providing hot meals, food items or respite programs to help parents with childcare, we believe all our neighbours have a role in building a resilient community. Every person has a seat at the table.

Community impact of Burlington Foundation funding

We are looking to further support the market (foodbank) community by ensuring that there are staple items at every guest visit and adequate multilingual signage to help folks navigate an already stressful situation. It is a pilot project to see if there is a way to reduce the anxiety felt around food insecurity. We also hope to increase communication and dignity, reduce anxiety, and foster a more welcoming space with signage in community languages.

Currently, we operate our Community Market on Tuesdays and Saturdays. The increase in demand for food has us considering opening on an additional day. We hope that our pilot project of maintaining a consistent stock of staples ready for our guests will reassure them that we can support them continuously, thereby reducing anxiety around access.

OPENDOORSCOMMUNITY.CA

- Email: OpenDoorsProgram@stcb.ca
Phone: 905.634.1809
Address: 662 Guelph Line Burlington ON
Social: OpenDoorsBurl, OpenDoorsAtStChristophers, OpenDoorsBurlington

# FUNDS HELD AT BURLINGTON FOUNDATION

🎯 TOTAL ASSETS UNDER MANAGEMENT **\$23,494,280**

🎯 NUMBER OF FUNDS MANAGED **115**

People come to our Foundation to learn how to make a difference in our community. It begins with the simple act of caring. Our team works with individuals and corporations to build a generosity plan aligning with their vision. This often includes opening and growing a unique endowment fund, ensuring the impact of their donated funds is felt in perpetuity across Burlington.

We thank our amazing community of **115 fundholders** for their vision and generosity, and we extend a warm welcome to community members who established new funds, including planned gifts with us over the past year:

## FUNDS HELD AT BURLINGTON FOUNDATION

- Aldershot School Fund
- Basadur Family Foundation Fund
- BDO Burlington Community Fund (Endowed and Term)
- Beatrice McDonough Family Foundation Fund
- Bette and Keith Munro Foundation Fund
- Beverley and Walter Mulkewich Community Development Fund
- Brechin Huffman and Henderson Fund
- Burlington Chamber of Commerce Scholarship Fund
- Burlington Community Foundation Impact Fund
- Burlington Community Fund
- Named Funds within Burlington Community Fund:
  - Hamilton Family Fund
  - Hogarth Family Foundation Fund
  - Mayor's Gala Fund
  - Mayor's Green Fund
  - Performing Arts Burlington Fund
  - Plains Road Village Vision Fund
- Burlington Community Youth Advancement Fund
- Burlington Economic Development Corporation Mayor's Apprenticeship Fund
- Burlington Medical Society Scholarship Fund
- Cheryl Miles Goldring Foundation Fund
- CLV Group/InterRent Trust Philanthropy Fund
- Crawford Lake Fund
- Creative Results for Kidz Endowment Fund
- Dalton Timmis Group Fund
- Dan Lawrie Family Foundation Fund (Endowed and Term)
- danceScape Endowment Fund
- David Bruce Sergeant Fund
- DeWitte Family Fund
- Donnell Insurance Foundation Fund
- Dr. John and Jennifer Bozek Family Fund
- Erica and Pat Smith Fund
- Ethel and Roly Bird Fund
- Eva and Lloyd Utter Memorial Fund
- Fontaine Family Fund (Endowed and Term)
- Foxcroft Family Fund
- Frank Allison Foundation Fund in Loving Memory of his Mother, Olga Allison
- Friends of Heritage Burlington Fund (Endowed and Term)
- Gurpuran and Marianne Singh-Waraich Fund

## FUNDS HELD AT BURLINGTON FOUNDATION

- H. Fred Janson Fund for the Developmentally Handicapped
- Haggerty/Durocher Fund
- Halton Heroes Fund (Endowed and Term)
- Healthy Reflections Fund (Endowed and Term)
- Helen Zdriluk Memorial Fund for the Performing Arts (Endowed and Term)
- James Paton Heron Fund
- Jean Ellen Griffin Fund
- Joyce Cooper Foundation Fund
- Kempe Family Fund
- Kimberley Kovalchek Legacy Fund
- Lawrence Sinclair Scholarship Fund
- Leggat Family Fund
- LKH Legacy Fund
- LKH Spirit Fund
- Louise Cooke Fund for the Visual and Performing Arts
- Mario Rende Scholarship Fund
- Marsh Family Fund
- Matthew C. Daly Scholarship Fund
- M.E. Devitt Term Fund
- Mental Wellness Endowment Fund
- Milne Family Foundation Fund (Endowed and Term)
- Nelson and Gary Allan Fund
- Nicholas Hurlbut Memorial Fund
- Now I Can Children's Fund
- Ontario Endowment for Children and Youth in Recreation Fund
- Pasquale (Pat) and Anita Paletta Foundation Fund
- Paul Hansell Foundation Fund
- Performing Arts Youth Endowment Fund
- Pieczonka Family Foundation Fund
- Pioneer Group Term Fund
- Ralph and Susan Sgro Family Fund
- Randy and Denise Reeve Family Fund (Endowed and Term)
- Reddon Family Fund
- Robert D. Gould Foundation Fund
- Robert West Fund
- Ruth Milne Fund (Endowed and Term)
- Sarah and Donald Munro Memorial Fund
- SB Partners Scholarship Fund
- Smiling Hearts Foundation Fund (Endowed and Term)
- Smith Family Fund
- Susan Marcus Foundation Fund
- Sydney Robis Memorial Fund
- Uffelmann Family Foundation Fund
- Valley Fund
- Vaski Family Performing Arts Fund
- Wealthbuilding Foundation Fund
- Weatherdon Fund for Early and Lifelong Nutrition Wills Memorial Fund

## AGENCY FUNDS

- Burlington Food Bank Fund
- Burlington Public Library Family of Funds:
  - Burlington Public Library Permanent Endowment Fund
  - Mae Beatrice Broadbent Fund
  - Margaret Clay Fund
  - Millicent McEwen Fund
  - Wendy Schick Fund
- Burlington Teen Tour Band Boosters Inc. Fund
- Carpenter Hospice Family of Funds:
  - Carpenter Hospice Endowment Fund
  - Walter and Louise White Fund
- Community Living Burlington Fund
- Conservation Halton Foundation Green Values Fund
- Halton Women's Place Fund
- Junior League of Hamilton-Burlington Fund
- United Way Halton & Hamilton Campaign Fund
- United Way Halton & Hamilton Tomorrow and Forever Fund

## FUNDS HELD ON BEHALF OF OTHERS

- Art Gallery of Burlington Fund
- Burlington Museums Foundation Fund
- Conservation Halton Foundation Fund

# Thank You

Our sincere gratitude and heartfelt thanks to all the people that make the work of the Burlington Foundation possible. Thank you to our volunteers, Board of Directors, donors, funders, fundholders, community organizations and committees. We could not do our impactful work without your dedication, time, loyalty, and financial contributions. Your desire to help those in need in our community is truly priceless.

For many years, corporations and partners in our community have supported the Foundation's mission, demonstrating their profound belief in supporting Burlington today and into the future.

Thank you to our corporate and family foundation partners for your generosity throughout the year and for funding the mission of our community foundation.



If you want to learn how your company or organization can support the Burlington community, please contact our team: [Info@BurlingtonFoundation.org](mailto:Info@BurlingtonFoundation.org) or 905.639.0744.

## How Burlington Foundation Works



Burlington Foundation is a charitable non-profit organization that has a long and trusted history of contributing time, leadership and financial gifts to charitable initiatives that benefit our community the most.

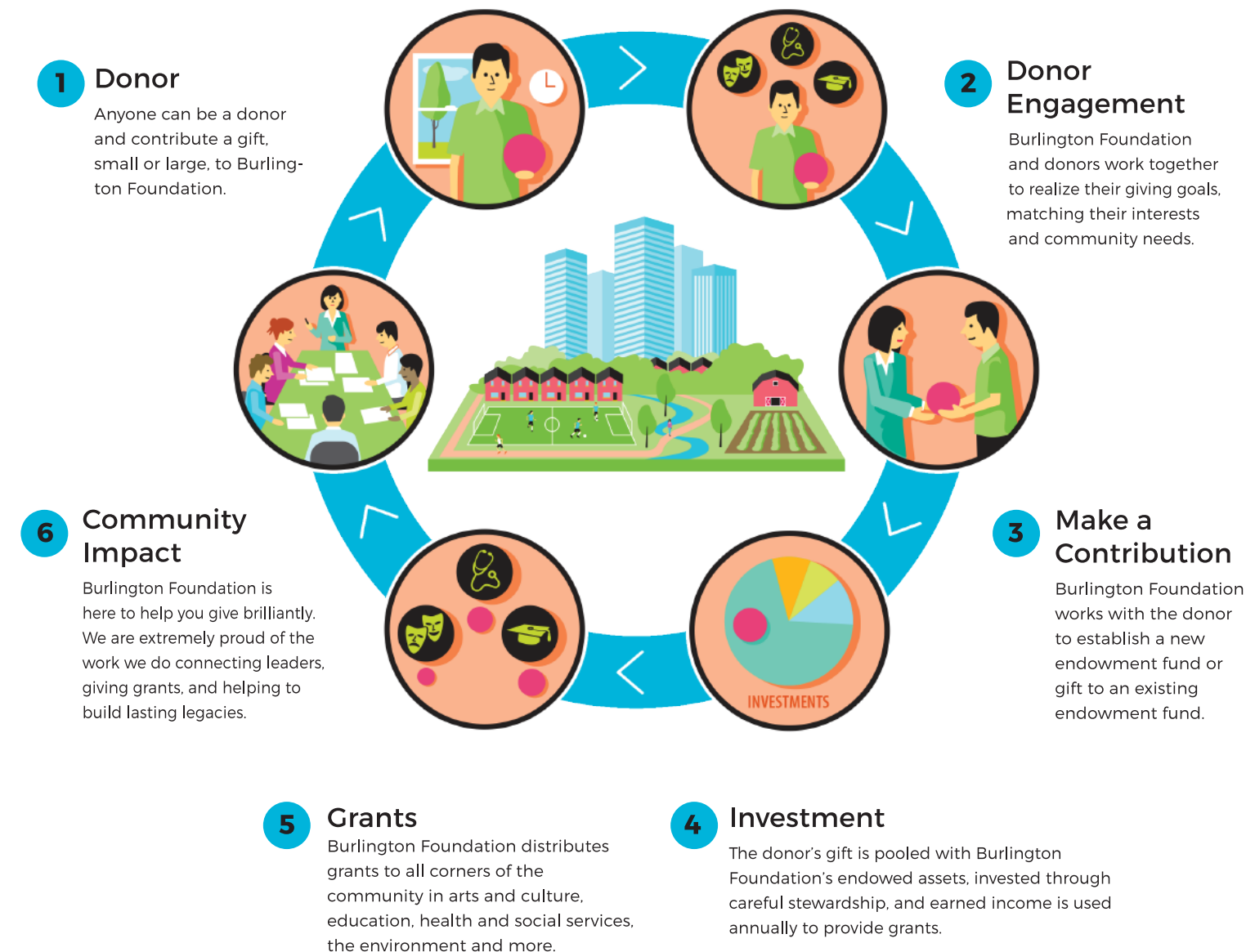


Diagram provided by COMMUNITY FOUNDATIONS OF CANADA

# ABOUT US



“ We envision a connected community where everybody belongs. We envision a community where everybody is informed and engaged, and philanthropy is accessible to everybody and that we’re all working towards **collective action** in our community. ”

-MEGAN TREGUNNO



We are Burlington's community foundation and have been leading change and supporting hundreds of non-profit organizations for over 24 years. We are one of 200+ community foundations across Canada working to create an inspired, strong, and sustainable future in our local community. We address local needs and issues, give grants to action change and progress, and engage community members, non-profit organizations, leaders, and partners to support community collaboration.

Thanks to the generosity of over **115 passionate** fund holders, we manage and steward **\$23.5M+** in community assets through a community endowment fund. We distribute annual grants to address current critical community needs and grow future funding through endowment building to ensure the ability to support emerging needs.

We are building a more connected Burlington through community engagement and supporting our citizens to help realize their vision for the community through generosity planning.

 **OUR MISSION**

We understand the difference we can make is greater when people work together. Our role is to make that happen.

 **VISION FORWARD**



We envision a Burlington where everyone is connected and belongs. We imagine a Burlington where informed and engaged citizens are leading and impacting change through collective action and generosity.

To achieve our vision, we critically assess our position as community leaders and identify how and where we need to evolve. We pledge to work with our Board and leadership to ensure all voices from the community are heard, included and that they reflect who Burlington is today.

We are committed to investing in our growth to continue having nimble and timely responses to our community's changing needs. This means investing in tools and our Foundation operations to support how donors and community members can and want to engage.

We have a deep sense of pride and great responsibility as a community leader. We are grateful to be part of a network of Canadian foundations working to build more connected communities and communities where everyone belongs.

## GET IN TOUCH WITH US

-  Burlington Foundation
-  5045 South Service Road, Suite 102  
Burlington ON L7L 5Y7
-  [BurlingtonFoundation.org](http://BurlingtonFoundation.org)
-  [Info@BurlingtonFoundation.org](mailto:Info@BurlingtonFoundation.org)
-  905.639.0744
-  @BurlingtonFoundation
-  Charitable Registration #857812739 RR 0001



**“Creating a Fund with the Burlington Foundation offers a profound and lasting way to leave a positive legacy.”**

**TIM CESTNICK,**  
INVESTMENT COMMITTEE CHAIR

Tim Cestnick, the Chair of the Investment Committee at the Burlington Foundation, sheds light on the foundation’s work and strategies. With a wealth of experience and a deep commitment to the community, Tim’s insights are valuable for understanding the foundation’s efforts.

The Investment Committee oversees the proper management and growth of the Foundation’s investment assets. Through regular meetings, the Committee reviews the portfolio’s composition and performance. They collaborate closely with our Outsourced Chief Investment partner, to explore new opportunities and make necessary adjustments.

In times like the COVID pandemic, the Burlington Foundation’s investment strategy stands out for its resilience. The foundation has constructed a portfolio designed to be “all-weather,” capable of performing well regardless of market conditions. Uniquely, over one-third of the foundation’s assets are invested in alternative strategies, which are non-publicly traded investments beyond stocks and bonds. This focus on alternative strategies has led to less volatility while enhancing returns. Throughout the volatile years of the pandemic, this approach has effectively preserved and grown capital.

Tim highlights the numerous advantages when it comes to encouraging community members to establish a Fund with the Burlington Foundation instead of opting for a bank. Establishing a Fund allows individuals to create a legacy that can endure for multiple generations. Unlike other public foundations, the Burlington Foundation provides insights into the community’s greatest needs and offers opportunities to network with other donors, amplifying the impact of their contributions. Additionally, having a Fund with the Burlington Foundation grants access to unique investment strategies that might not be readily available elsewhere.

Moreover, a Fund provides significant flexibility in tax planning by enabling the separation of donation timing for tax objectives and the ultimate distribution timing to the chosen charity. It also allows individuals to involve their children or grandchildren in allocating gifts to charities, imparting the value of giving back.

As an advisor, Tim observes changing trends in philanthropy, particularly among families, who now strive for more strategic giving. Rather than making ad-hoc donations, individuals seek meaningful and impactful ways to make a difference. They want to ensure that their

charitable dollars are effectively utilized, and they value transparency in understanding the impact of their contributions. Families are more deliberate in selecting areas they wish to support and aligning themselves with charities that share their values.

Tim suggests that creating a Fund with the Burlington Foundation offers a profound and lasting way to leave a positive legacy. A Fund can serve as a platform for imparting important lessons to future generations, including good governance, investment strategy, business principles, and the significance of giving back.

Finally, Tim expresses his deep inspiration and appreciation for Burlington, his home, for the past 30 years. He highlights the community’s tremendous opportunities in various aspects of life, be it business, sports, the arts, or hobbies. The community’s caring nature and concern for its members and the wider world make Burlington unique. Its ideal location between Toronto and Niagara provides residents access to the best of everything life offers. For Tim, there’s nowhere else he would rather live.



 [READ OUR FULL 2022/23 AUDITED FINANCIALS HERE](#)

## TIM CESTNICK

FCPA, FCA, CPA(IL), CFP, TEP  
Co-Founder and Chief  
Executive Officer

### OUR FAMILY OFFICE INC.

-  2 Queen St. East Suite 801  
Toronto ON M5C 3G7
-  416.304.9877
-  [Tim@OurFamilyOffice.ca](mailto:Tim@OurFamilyOffice.ca)
-  [OurFamilyOffice.ca](http://OurFamilyOffice.ca)

“There’s such an opportunity to come together as a community and establish a rallying cry for change right in our community and making sure that the well-being of everybody is taken care of.”

**CATHERINE BRADY, BOARD CHAIR**



We are Burlington’s Foundation. We need to continue to rally together to meet the increasing needs of our diverse and growing community. Resources are stretched, and a lack of funding leaves many community members and non-profit organizations making tough decisions, often impacting their ability to deliver their missions. Since we’ve amplified our community engagement efforts, we’ve realized that, sadly, the needs of all our community members are not being met. We can change that.

We appreciate your help supporting others in any way you can. The more we continue to work together, the more significant our impact will be.

We are grateful to the leaders, staff teams and supporters who have grown our Foundation to where we are today – and we’re excited to build on this momentum by continuing to work with our community through collaboration and collective action.

Together, with your help, we will continue to evolve to support our community.

**WE THANK YOU!**

## 2022-2023 BOARD OF DIRECTORS

**CATHERINE BRADY, CHAIR**  
Retired Business Leader & Community Advocate

**MATT AFINEC, IMMEDIATE PAST CHAIR**  
President & COO, Business Operations, Hamilton Tiger-Cats Football Club, and Forge FC Hamilton Soccer Club

\*Director, as of March 2023

**TIM CESTNICK, CHAIR, INVESTMENT COMMITTEE**  
Co-Founder and CEO, Our Family Office Inc.

**DOM MARINIC, INVESTMENT COMMITTEE**  
Director of Investments, The Pioneer Group Inc.

**CARLOS ALVAREZ\***  
Partner, KPMG LLP

**KEVIN BRADY**  
Director, Advica Health; Director Corporate Health, NFP Canada

**JOHN ROCKX, TREASURER**  
Partner, KPMG LLP

**CATHERINE OLSIAK**  
Partner, SimpsonWigle Law LLP

## 2022-2023 INVESTMENT COMMITTEE

To ensure the goals of the Foundation are met, an Investment Committee of senior volunteers with extensive knowledge in the investment field provides oversight and monitors investment performance. Reporting to the Board of Directors, the Committee is responsible for:

- ✔ Establishing our investment policy
- ✔ Establishing target asset mix
- ✔ Monitoring performance
- ✔ Monitoring the Foundation’s disbursement rate

**TIM CESTNICK, CHAIR**  
Co-Founder and CEO, Our Family Office Inc.

**LISA RITCHIE**  
Vice President Emeritus, Burgundy Asset Management Ltd.

**PHIL REDDON**  
Managing Partner, Covington Capital Corp.

**DOM MARINIC**  
Foundation Board Member & Director of Investments, The Pioneer Group Inc.



# BURLINGTON FOUNDATION TEAM

## CONNECT WITH US

### **MEGAN TREGUNNO, CFRE**

President & CEO

289.779.7951

MTregunno@BurlingtonFoundation.org

### **OSOB ADUS**

Director, Grants & Community Engagement

289.779.7950

OAdus@BurlingtonFoundation.org

### **FINANCE INQUIRIES**

Finance@BurlingtonFoundation.org

## 2022-2023 RAPID GRANT REVIEW VOLUNTEERS

From time to time, Burlington Foundation administers funding grants from the Government of Canada to local charitable recipients in our community. Community volunteers participate in the decision-making process, ensuring community voices are included and representative of the communities we serve.

Chi miigwech (thank you very much) to our generous community volunteers in Burlington for sharing their time and wisdom.

### **ARLINDA STONEFISH (WHITEEAGLE)**

Elder and Indigenous Healer

### **CATHERINE BRADY**

Chair, Burlington Foundation

Board of Directors &

Community Advocate

### **DR. LEE FORD JONES**

Retired Physician,

SickKids Hospital

**IF YOU ARE INTERESTED IN VOLUNTEERING  
WITH THE FOUNDATION, PLEASE CONNECT.**



**BURLINGTON  
FOUNDATION**

Give brilliantly™