

# Working Together to Lift Up Community

**2020-2021**

**YEAR IN REVIEW**

ANNUAL REPORT

disproportionate impact

united

pressing need

resolve

sacrifice

food insecurity



frontline

resilience

mental health

generosity

safe housing



response efforts

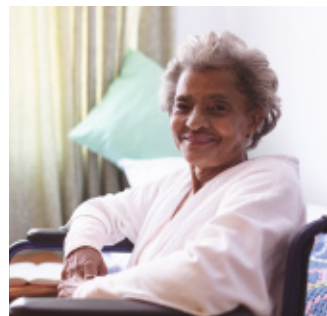
task force

heroic

rapid response

isolated seniors

tireless



**BURLINGTON**  
FOUNDATION  
Give brilliantly™

# In a Year Like No Other, We Stand Strong Together



“Adversity does not build character, it reveals it.” If this is true – and we believe it is – then this past year has been a year of community character coming into plain sight.

Just as spring 2020 arrived, we were all plunged into a year of adversity like we have not seen in generations. How would we respond? As we anticipated, our community of donors, fundholders, corporate partners, and agencies responded as we knew they would: thoughtfully and generously.

We mobilized quickly to meet critical and immediate needs brought on by the pandemic. Thanks to the generosity of donors, we quickly amassed \$453,455 in a COVID-19 Response Fund. Over the year, through four phases of relief granting, 44 charities across a spectrum of sectors received a total of 65 critical grants so they could pivot programs and services to meet the realities of operating in a pandemic world. We also partnered with the Government of Canada and Community Foundations Canada to manage and deliver \$476,370 to 23 charities, with the organizations receiving a total of 30 grants through two phases of the Emergency Community Support Fund.

Daily, we are amazed at the perseverance and unity of our charitable partners. Never faltering, never wavering – working tirelessly to ensure that our most vulnerable community members receive the care and support they need to manage through this unprecedented pandemic.

Beyond COVID-19, at the very heart of our work we engage people and help them connect to their own sense of belonging and invite them to make meaningful contributions to their community. This past year, working with new and existing fundholders, the Foundation received over \$1.3-million in new assets.

We are appreciative of the trust that our fundholders place in us to make prudent investments and assure sound financial management practices, guaranteeing that the legacy created by each of them is respected in perpetuity.

As we move forward into a new operating year, supporting our community this past year through the ravages of COVID-19 has reaffirmed for us that our mission could not be more important: **We understand the difference we can make is greater when people work together. Our role is to make that happen.**

On behalf of the Board of Directors and team at Burlington Foundation, we sincerely thank you for all that you do to care for, and support, our wonderful community.

**Matt Afinec**  
Board Chair

**Colleen Mulholland**  
President & CEO



# Experienced Leadership



## Board of Directors 2020-2021

### **Matt Afinec, Chair**

President & COO,  
Business Operations,  
Hamilton Tiger-Cats Football Club,  
2021 Grey Cup Festival – Hamilton,  
and Forge FC Hamilton Soccer Club

### **John Rockx, Treasurer**

Partner, KPMG LLP

### **Catherine Brady**

Community Advocate

### **Tim Cestnick**

**Chair,  
Investment Committee**

Co-Founder and CEO,  
Our Family Office Inc.

### **Neil Oliver**

Executive Vice President,  
Torstar and President of  
Daily News Brands

### **Tim Hogarth, Past Chair**

President & CEO,  
The Pioneer Group Inc.

### **Kevin Brady**

Director, Advica Health;  
Director Corporate Health,  
NFP Canada

### **Ron Foxcroft**

Chairman and CEO,  
Fox40 International and  
Fluke Transportation Group

### **Catherine Olsiak**

Partner,  
SimpsonWigle Law LLP

## Investment Committee 2020-2021

### **Tim Cestnick, Chair, Investment Committee**

Co-Founder and CEO,  
Our Family Office Inc.

### **Tim Hogarth**

President & CEO,  
The Pioneer Group Inc.

### **Dom Marinic**

Director,  
Investments  
The Pioneer Group Inc.

### **Phil Reddon**

Managing Partner,  
Covington Capital Corp.

### **Lisa Ritchie**

Vice President,  
Burgundy Asset  
Management



**2021  
WOMEN of  
DISTINCTION Awards**

## CEO, Colleen Mulholland Honoured with Lifetime Achievement Award

Burlington Foundation is proud to recognize the awarding of the 2021 YWCA Hamilton's Women of Distinction Lifetime Achievement Award for Hamilton and Halton to our CEO, Colleen Mulholland. The awarding of this honour recognized the significant contributions to community Colleen has made throughout her 30-year career in her role with the Foundation and through her past executive positions with Canadian Diabetes Association, Ontario Chamber of Commerce and the Ontario Centres of Excellence.

# Thank You for Enabling Us to Keep a Strong Focus on our Mission



With unexpected challenges facing us all this year, having the critical support of our Change Makers and our corporate partners enabled the Foundation to keep a strong focus on our charitable mission of helping individuals and families in our community who are in greatest need.

From supporting frontline charities assisting community members most impacted by COVID-19, to helping our local charities rebuild for the future, we are grateful to these supporters for helping us so we could continue to help others.



Because of our members' generous, unrestricted gifts over 3 years to Burlington Foundation, the quality of life in Burlington today, and for tomorrow, is greatly enhanced.

## \$20,000 or more

Foxcroft Family  
Pioneer Energy

## \$10,000 - \$19,999

Branthaven Homes  
Tim & Carolyn  
Cestnick

## \$5,000 - \$9,999

Basadur Family  
Matt & Michelle Afinec  
Mulholland Family  
Reddon Family

## \$2,500 - \$4,999

James & Catherine  
Brady  
John & Barb Rockx  
Neil Oliver & Family

Corporate  
Supporters  
2020-2021

**PIONEER ENERGY**

**FLUKE TRANSPORTATION FOX 40**

**FIRSTONTARIO CREDIT UNION**

**RBC ROYAL BANK**

**SMITH'S FUNERAL HOMES**

**COGECO**

# Responding to Pressing Need During the **COVID-19 Pandemic**



Since March 2020, Burlington Foundation was actively involved in addressing the impact of the COVID-19 crisis on our community. Knowing 30% of charities in Canada are not expected to survive the pandemic, we were keenly aware of the intense demands this unprecedented pandemic placed on the charitable sector as we all worked to support our community.

Throughout the past year of fast changing conditions, Burlington Foundation created, delivered and participated in rapid response initiatives to address the many urgent and critical needs of our hardworking charities and our most vulnerable Burlington community members.

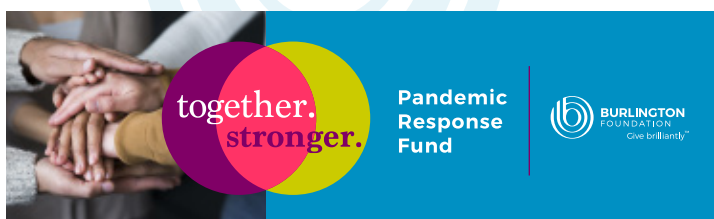


**In keeping with our mission, the Foundation focused on the 3 pillars of what we do:**

**Connecting:** We engaged with community leaders and agency partners as we worked together to maximize the impact of our support.

**Stewarding Giving:** Through the contributions of donors and the Foundation, we grew and facilitated giving to make new pandemic funding available as well as to continue to grow legacy fund giving for the long term.

**Granting:** In addition to supporting the granting wishes of our fundholders, we also established and participated in responsive granting initiatives including Burlington Foundation's Pandemic Response Fund and the Government of Canada's Emergency Community Support Fund.



# Coming Together with Donors and Community Leaders During COVID-19



## Connecting With Community Partners

Throughout the year, Burlington Foundation came together with community partners to leverage collective expertise and community knowledge, ensuring our efforts met the greatest needs of our communities most disproportionately impacted by the pandemic. Through this approach, we focused on ensuring our funding reached organizations that needed it the most, while limiting duplication of support to regional charities.

**Regional Task Force: Halton Funder's Roundtable:**  
Burlington Foundation engaged with Halton Region, United Way of Halton & Hamilton, Oakville Community Foundation, and Halton North Community Foundation. The purpose was to share information, understand local needs, and collectively be aware of granting and funding efforts of numerous organizations.

**City of Burlington Mayor's COVID-19 Task Force:**  
As a member of the Mayor's Task Force, we collectively shared information and mobilized community and agency resources to support our healthcare and broader community needs on COVID-19.



## \$453,455 in New Pandemic Granting Capacity Built While Additionally Growing \$1.3M in New Assets

In March 2020, Burlington Foundation with generous support from Pioneer Energy, announced the creation of our COVID-19 Pandemic Response Fund with an initial \$100,000 commitment. Through further conversations with our donor network, including a \$250,000 gift from the Paletta family, the fund grew to a total of \$453,455. Providing critical emergency grants through the fund would not be possible without the kindness of donors. Our heartfelt thank you to our many donors including: The Paletta Family, Pioneer Energy, Randy and Denise Reeve Family Fund, Milne Family Foundation Fund, Pieczonka Family Foundation Fund, LKH Spirit Fund, BDO Burlington Community Fund, Dalton Timmis Group Fund, and several community donors.

In addition to pandemic focused giving, through the generosity of our donors in 2020-2021, the Foundation received \$1,300,000 in new assets. Growing our endowed and term assets provides further opportunity for our fundholders to provide grants to charitable endeavours that they are passionate about today, and tomorrow.



# \$929,825 in Pandemic Granting Awarded Across 67 Charities

*rapid  
response*



Burlington Foundation's Pandemic Response Fund was established at the onset of the crisis to support community-based relief efforts. As we recognized the rapidly evolving nature of the situation, the granting was delivered through four phases over the course of the 2020-2021 year. Through this model, we were able to continue to evaluate and respond to changing community needs.

Through our initial Phases 1 and 2 Pandemic Response Grants, our goal was to enable our local charitable partners to adapt, expand, or initiate vital services to the Burlington community as a result of the pandemic. With Phase 3 grants, we additionally recognized the need to support operational needs for sectors of our charitable landscape that were devastated but weren't 'emergency' focused. And with the second wave of COVID-19 striking our community and driving even more demand for emergency relief, Phase 4 grants provided much needed further critical support.

**With these new grant awards, the Fund provided \$453,455 in grant relief across 44 charities to assist them in their response efforts, recognizing the long term implications of the pandemic for the non-profit sector.**

GRANTING



In 2020-2021, Burlington Foundation was pleased to be a participating partner with the Government of Canada and Community Foundations of Canada in delivering the federal \$350-million Emergency Community Support Fund (ECSF).

Launched in May 2020, this funding initiative was created to help community organizations adapt frontline services to better meet the needs of people experiencing heightened vulnerability during the COVID-19 pandemic.

Funded by The Government of Canada, support flowed through Community Foundations of Canada (CFC), United Way Centraide Canada and the Canadian Red Cross, with Burlington Foundation delivering the funding locally.

As a testament to the tremendous community need, grant requests to the ECSF program Canada-wide were five times the available monies. At the local level, maintaining strong partnerships with our regional Halton Funder's Roundtable enabled us to maximize our region's grant selections.

**Through the two rounds of ECSF funding, the Foundation awarded a total of \$476,370 to 23 frontline charities serving our most vulnerable community members.**

## Granting to Community

**\$1,663,196.79**

**Total Charitable Grants Awarded in 2020-2021**

(Includes Pandemic Related Granting)

**87**

**Charitable Organizations**

**Supported in 2020-2021**

**\$8,156,672.85**

**Total Grants Awarded**

**Since Burlington Foundation**

**Inception in 1999**



# Complete List of Grants 2020-2021



Through the staggering level of challenge impacting community in 2020-2021, we were truly inspired by the sacrifice, commitment, and giving of our charitable agencies, donors and fundholders. Working with our fundholders, donors and government partners to help their giving make the greatest impact in community, this year the Foundation was proud to grant over \$1.6-million.

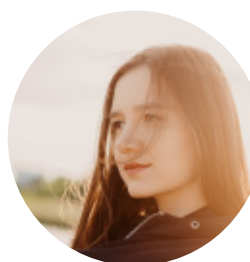
Building up community and providing vital support to charitable organizations, this notable granting supports 87 organizations across a wide spectrum, with grants addressing critical community needs and the passions and wishes of our fundholders. We celebrate the tremendous continuing impact of our donors as we share the following list of 2020-2021 grants.

<b>Acclaim Health</b>	<b>\$19,885.00</b>
<b>Alzheimer Society of Brant, Haldimand</b>	<b>\$4,000.00</b>
<b>Art Gallery of Burlington</b>	<b>\$27,500.00</b>
<b>ArtHouse</b>	<b>\$14,000.00</b>
<b>Big Brother/Sisters of Hamilton Burlington</b>	<b>\$6,000.00</b>

<b>Brock University</b>	<b>\$536.13</b>
<b>Brott Music Festival</b>	<b>\$12,000.00</b>
<b>Burlington Civic Chorale</b>	<b>\$4,000.00</b>
<b>Burlington Community Foundation</b> (Grant gifts from fundholders)	<b>\$17,644.00</b>
<b>Burlington Humane Society</b>	<b>\$1,943.69</b>



making an  
**impact**





*"Shifra Homes is extremely grateful for this granting which has enabled us to keep our doors open to new admissions and vulnerable at-risk youth that were homeless and pregnant. Our new babies are growing up without knowing hunger or homelessness and their mothers are moving forward to finish their education while becoming amazing parents. It is with a humble heart that we thank Burlington Foundation and donors for supporting our work in the community."*

Nancy Romic, Executive Director, Shifra Homes Inc.

Burlington New Millennium Orchestra	\$8,000.00
Burlington Performing Arts Centre	\$1,799.24
Burlington Symphony Orchestra	\$15,000.00
BurlingtonGreen Environmental Association	\$37,000.00
Canadian Mental Health Association	\$14,000.00

Canadian Red Cross	\$6,000.00
Carleton University	\$5,000.00
Carpenter Hospice	\$19,500.00
Children's Aid Foundation of Halton	\$17,957.00
City of Burlington	\$32,139.44



*"We are so incredibly appreciative for the support from Burlington Foundation and your donors. During these challenging times, Community Living Burlington's goal is to ensure the people we support still feel connected to their community, and this funding helps us ensure that people continue to thrive during the pandemic."*

Emily Huang, Senior Manager, Community and Resource Development  
Community Living Burlington



<b>Community Living Burlington</b>	<b>\$15,000.00</b>
<b>Community Youth Programs Incorporated</b>	<b>\$1,500.00</b>
<b>Compassion Society of Halton</b>	<b>\$17,000.00</b>
<b>Conservation Halton Foundation</b>	<b>\$9,106.08</b>
<b>Crohn's and Colitis Foundation Canada</b>	<b>\$2,000.00</b>

<b>Dare to Be You</b>	<b>\$20,000.00</b>
<b>Darling Home for Kids</b>	<b>\$28,000.00</b>
<b>Diabetes Canada</b>	<b>\$5,000.00</b>
<b>Distress Centre Halton</b>	<b>\$25,000.00</b>
<b>Dorothy Ley Hospice</b>	<b>\$2,723.32</b>

*“Open Doors at St. Christopher's and the Burlington Food Bank were able to utilize our \$10,000 Phase 1 Pandemic Response Fund grant to increase the amount of fresh produce delivered to families versus pre-pandemic levels. This resulted in a boost of over 7900 lbs of fresh produce to the Food Bank. Many thanks for recognizing the critical importance of food security and giving us the opportunity to increase our support of Burlington families during the pandemic.”*

**Christina Mulder**, Director of Open Doors Programs and Partnerships  
**Robin Bailey**, Executive Director, Burlington Food Bank



<b>Dundas Valley School of Art</b>	<b>\$5,000.00</b>
<b>Easter Seals Ontario</b>	<b>\$21,500.00</b>
<b>EcoSpark</b>	<b>\$7,000.00</b>

<b>Fanshawe College</b>	<b>\$536.13</b>
<b>Food for Life</b>	<b>\$138,565.00</b>
<b>Forestview Bible Church</b>	<b>\$10,700.00</b>



**nourishing  
neighbours**





*“When COVID-19 took us by surprise early on, Conservation Halton was forced to close our parks during a time when it was needed most. Funding from Burlington Foundation helped us to integrate new technology to safely re-open the parks using a scheduled and contactless reservation system.”*

**Garner Beckett**, Executive Director, Conservation Halton Foundation

<b>GiftFunds Canada</b>	<b>\$5,000.00</b>
-------------------------	-------------------

<b>Habitat for Humanity - Halton</b>	<b>\$74,250.00</b>
--------------------------------------	--------------------

<b>Halton Down Syndrome Association</b>	<b>\$5,000.00</b>
---	-------------------

<b>Halton Food for Thought</b>	<b>\$26,014.00</b>
--------------------------------	--------------------

<b>Halton Learning Foundation</b>	<b>\$30,000.00</b>
-----------------------------------	--------------------

<b>Halton Women's Place</b>	<b>\$64,000.00</b>
-----------------------------	--------------------

<b>Hamilton Health Sciences Foundation</b>	<b>\$148,719.94</b>
--	---------------------

<b>Home Suite Hope</b>	<b>\$5,000.00</b>
------------------------	-------------------

<b>Humber College</b>	<b>\$500.00</b>
-----------------------	-----------------

<b>Joseph Brant Hospital Foundation</b>	<b>\$31,000.00</b>
---	--------------------



**safeguarding  
the  
vulnerable**

*“ Burlington Foundation's grant gave our Acclaim Health 'club members' opportunities to stay connected and engaged during the pandemic. Sixty-five of our Burlington Adult Day Program clients received weekly porch drop activity packages tailored to their interests, keeping our clients with dementia happy and giving our vital caregivers a much needed break.”*

**Laura Pizzacalla**, Senior Philanthropy Associate, Acclaim Health



**Acclaim  
Health**





Learning Disabilities Association	\$37,626.00
-----------------------------------	-------------

Liberty for Youth	\$5,000.00
-------------------	------------

Literacy South Halton	\$5,000.00
-----------------------	------------

McMaster University	\$2,000.00
---------------------	------------

Multiple Sclerosis Society of Canada	\$1,943.69
--------------------------------------	------------

Ontario Medical Foundation	\$1,925.70
----------------------------	------------

Partnership West Family Support Network (Burlington Food Bank)	\$5,000.00
--	------------

PIH Partners In Health Canada	\$1,791.69
-------------------------------	------------

Plan International	\$2,055.00
--------------------	------------

Queen's University	\$1,000.00
--------------------	------------

*“During this pandemic, we’ve seen upwards of a 60% increase in children’s behavioural changes. Anxiety is the number one issue, with a new ‘stable’ anxiety becoming normalized that is crippling children and youth. It has been imperative for ROCK to shift our supports immediately to virtual so we could be there for families suffering. Burlington Foundation’s generous granting has helped us tremendously to respond quickly and safely with life-impacting help our families need.”*

Kirsten Dougherty, Chief Executive Officer, ROCK Reach Out Centre for Kids



Reach Out Centre for Kids	\$101,736.68
---------------------------	--------------

Restorations Second Stage Home	\$25,000.00
--------------------------------	-------------

Rotary Foundation Canada	\$2,000.00
--------------------------	------------

Royal Botanical Gardens	\$205,000.00
-------------------------	--------------

SAVIS of Halton Sexual Assault & Violence Intervention Services	\$9,769.69
---	------------

Shakespeare in Action	\$5,000.00
-----------------------	------------



connecting  
community





*“Joseph Brant Hospital is grateful for the support of Burlington Foundation and their donors. The grant support ensured we were able to transition delivery of care models and services quickly and that we had the right tools and resources to safeguard our patients, staff and community. The support from our entire community during this pandemic has meant so much to our frontline healthcare workers.”*

Anissa Hilborn, President, Joseph Brant Hospital Foundation

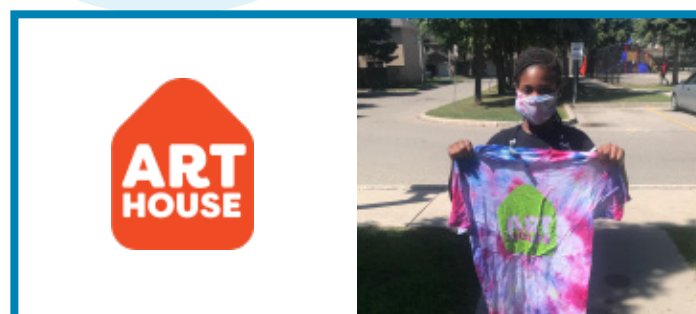
Shifra Homes Inc.	\$18,000.00
Society of Saint Vincent de Paul	\$9,854.98
Southern Ontario Lyric Opera	\$11,000.00
Speroway	\$500.00
St Luke's Anglican Church	\$7,000.00

St. Christopher's Church	\$46,000.00
St. Matthew on the Plains Anglican Church	\$6,000.00
Starlight Children's Foundation Canada	\$5,000.00
Telling Tales	\$4,000.00
The Bruce Trail Conservancy	\$3,000.00



*“Arthouse is extremely grateful to Burlington Foundation and donors for giving us the opportunity to reach our families in many special ways over the past 6 months. Their needs have increased and thanks to you we have been able to help. From the weekly delivery of fresh dinners to virtual and safe live pop-up arts programming to providing them with ‘experienced’ computers, our goal is support the Whole Child in an atmosphere that is safe and supportive. Thank you!”*

Don Pangman, Founder and Executive Director, Arthouse





<b>The Colin B Glassco Charitable Foundation</b>	<b>\$25,000.00</b>
<b>The Parish Church of St. Luke</b>	<b>\$15,000.00</b>
<b>The Primate's World Relief &amp; Development</b>	<b>\$3,000.00</b>
<b>The Salvation Army Burlington Community &amp; Family Services</b>	<b>\$21,500.00</b>
<b>The Willow Foundation</b>	<b>\$20,000.00</b>

<b>Tottering Biped Theatre</b>	<b>\$12,000.00</b>
<b>United Way Halton &amp; Hamilton</b>	<b>\$10,597.24</b>
<b>University of Guelph</b>	<b>\$1,800.00</b>
<b>University of Waterloo</b>	<b>\$6,300.00</b>
<b>University of Western Ontario</b>	<b>\$1,000.00</b>

*"This generous grant support has assisted us tremendously in being able to quickly and successfully change our service delivery, staffing and programs to adhere to Public Health guidelines. We could not have supported our clients in shelter and in community without this grant. COVID-19 changed everything for Halton Women's Place except for our commitment to keeping abused women and their children safe. Thanks to this gift, we've maintained our commitment to not only keeping our clients safe from their abusive situations, but also from the pandemic."*

**Carmela Bozzo**, Manager, Development & Communications, Halton Women's Place



<b>Wellington Square United Church</b>	<b>\$13,000.00</b>
<b>Wesley Urban Ministries</b>	<b>\$5,000.00</b>
<b>Wilfrid Laurier University (Waterloo)</b>	<b>\$7,979.80</b>

<b>YMCA Hamilton Burlington Brantford</b>	<b>\$35,000.00</b>
<b>YWCA of Hamilton/Burlington</b>	<b>\$1,797.35</b>

**TOTAL GRANTS 2020-2021**

**\$1,663,196.79**



**giving  
brilliantly**



## **Creating Legacies of Giving**

Funds Held at Burlington Foundation

**110**

**Number of Funds Managed**

**\$19,343,050**

**in Assets Under Management**

# Committed to Helping Community



**Since 1999, Burlington Foundation fundholders have been having an important, sustainable impact on our local community.**

Whether an individual, family, corporate, or agency partner, by establishing a fund with the Foundation, our fundholders demonstrate their commitment to helping community, along with their intent to make the biggest difference possible. And through uniting this passion of our donors

with the Foundation's leadership and strong community knowledge, together we continue to make the future brighter for generations to come.

Today, we're proud to partner with our fundholders in stewarding 110 funds. In 2020-2021, thanks to both new and longstanding fundholders, and their commitment to bettering community, Burlington Foundation is stewarding \$19,343,050 in assets.

Aldershot School Fund  
Basadur Family Foundation Fund  
BDO Burlington Community Fund (Endowed and Term)  
Beatrice McDonough Family Foundation Fund  
Bette and Keith Munro Foundation Fund  
Beverley and Walter Mulkewich  
Community Development Fund  
Breachin Huffman and Henderson Fund  
Burlington Chamber of Commerce Scholarship Fund  
Burlington Community Foundation Impact Fund  
Burlington Community Fund  
Named Fund within Burlington Community Fund:  
Hamilton Family Fund  
Burlington Community Youth Advancement Fund  
Burlington Economic Development Corporation  
Mayor's Apprenticeship Fund  
Burlington Medical Society Scholarship Fund

Crawford Lake Fund  
Creative Results for Kidz Endowment Fund  
Dalton Timmis Group Fund  
Dan Lawrie Family Foundation Fund  
(Endowed and Term)  
Dan Noonan Charitable Tax Program Foundation Fund  
danceScape Endowment Fund  
David Bruce Sergeant Fund  
DeWitte Family Fund  
Donnell Insurance Foundation Fund  
Dr. John and Jennifer Bozek Family Fund  
Erica & Pat Smith Fund  
Ethel and Roly Bird Fund  
Eva and Lloyd Utter Memorial Fund  
Fontaine Family Fund (Endowed and Term)  
Foxcroft Family Fund

Frank Allison Foundation Fund in Loving Memory of his Mother, Olga Allison

Friends of Heritage Burlington Fund (Endowed and Term)

Curpuran and Marianne Singh-Waraich Fund

H. Fred Janson Fund for the Developmentally Handicapped

Haggerty/Durocher Fund

Halton Heroes Fund (Endowed and Term)

Healthy Reflections Fund (Endowed and Term)

Helen Zdriluk Memorial Fund for the Performing Arts (Endowed and Term)

Hogarth Family Foundation Fund

James Paton Heron Fund

Jean Ellen Griffin Fund

Joyce Cooper Foundation Fund

Kimberley Kovalchek Legacy Fund

Lawrence Sinclair Scholarship Fund

Leggat Family Fund

LKH Legacy Fund

LKH Spirit Fund

Louise Cooke Fund for the Visual and Performing Arts

Mario Rende Scholarship Fund

Marsh Family Fund

Matthew C. Daly Scholarship Fund

Mayor's Gala Fund

Mayor's Green Fund

Mayor's Opportunity Fund

Mental Wellness Endowment Fund

Milne Family Foundation Fund (Endowed and Term)

Nelson and Gary Allan Fund

Nicholas Hurlbut Memorial Fund

Now I Can Children's Fund

Ontario Endowment for Children and Youth in Recreation Fund

Pasquale (Pat) and Anita Paletta Foundation Fund

Paul Hansell Foundation Fund

Performing Arts Burlington Fund

Performing Arts Youth Endowment Fund

Pieczonka Family Foundation Fund

Pioneer Group Term Fund

Plains Road Village Vision Fund

Ralph and Susan Sgro Family Fund

Randy and Denise Reeve Family Fund (Endowed and Term)

Reddon Family Fund

Robert D. Gould Foundation Fund

Robert West Fund

Ruth Milne Endowment Fund

Sarah and Donald Munro Memorial Fund

SB Partners Scholarship Fund

Smiling Hearts Foundation Fund (Endowed and Term)

Smith Family Fund

Sydney Robis Memorial Fund

Uffelmann Family Foundation Fund

Valley Fund

Vaski Family Performing Arts Fund

Weatherdon Fund for Early and Lifelong Nutrition

Wills Memorial Fund

#### **Agency Funds:**

Burlington Food Bank Fund

Burlington Public Library Family of Funds:

Burlington Public Library Permanent Endowment Fund

Mae Beatrice Broadbent Fund

Margaret Clay Fund

Millicent McEwen Fund

Wendy Schick Fund

Burlington Teen Tour Band Boosters Inc. Fund

Carpenter Hospice Family of Funds:

Carpenter Hospice Endowment Fund

Walter and Louise White Fund

Community Living Burlington Fund

Conservation Halton Foundation Green Values Fund

Halton Women's Place Fund

Junior League of Hamilton-Burlington Fund

United Way Halton & Hamilton Campaign Fund

United Way Halton & Hamilton

Tomorrow and Forever Fund

#### **Funds Held on Behalf of Others:**

Art Gallery of Burlington Fund

Burlington Museums Foundation Fund

Conservation Halton Foundation Fund



**BURLINGTON**  
FOUNDATION  
Give brilliantly™

**Burlington Foundation Audited Financial Statements Available at:**

<https://burlingtonfoundation.org/about/year-in-review-annual-report-financial-statements/>



**[burlingtonfoundation.org](https://burlingtonfoundation.org)**



@BurlingtonFDN



@BurlingtonFoundation



5045 South Service Road, Suite 102  
Burlington, Ontario L7L 5Y7

905.639.0744

[info@burlingtonfoundation.org](mailto:info@burlingtonfoundation.org)



Charitable number: 857812739 RR 0001



**BURLINGTON**  
FOUNDATION  
Give brilliantly™